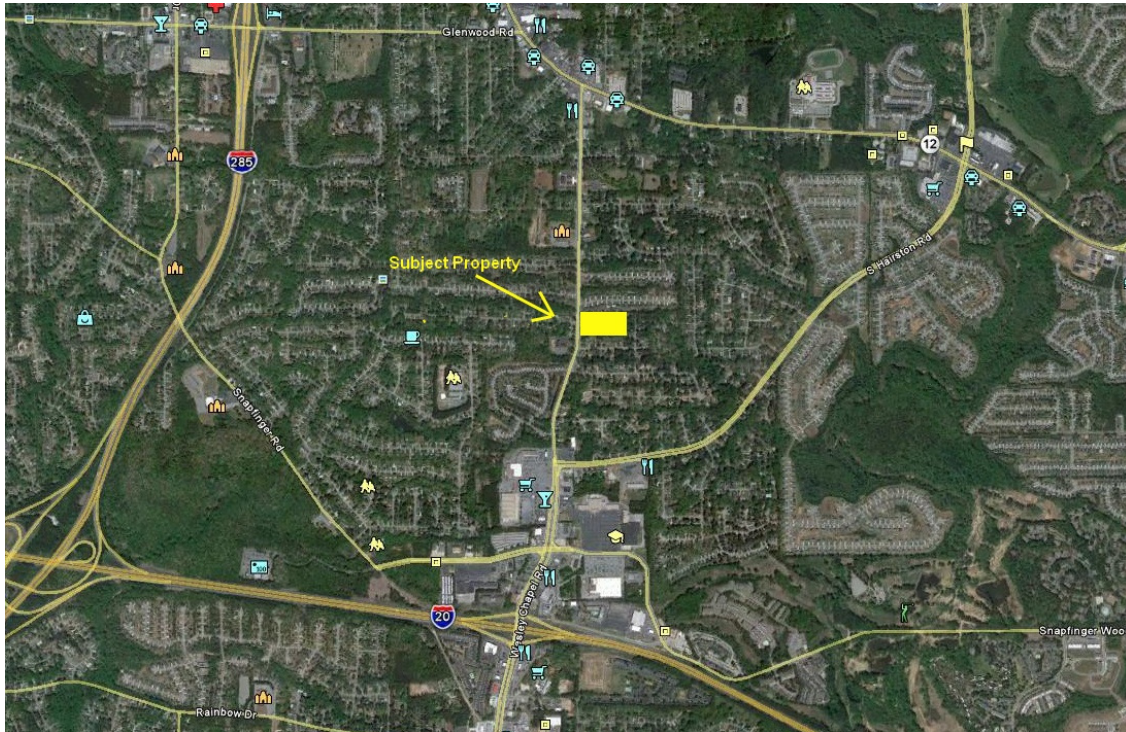


220 Wesley Chapel Rd ~ Decatur

4.74 Acres, Zoned O & I in Prime Location!

\$359,000



- **Owner Financing Available!**
- **Previously approved for Residential and Daycare**
- **Potential property for a Church**
- **Close to shopping**
- **Minutes from I-20 and I-285**

Directions:

From I-20 take Wesley Chapel and go north 1 mile. Property will be on your right.

*R*eady
resources
corporation

102 Hammond Dr
Atlanta Ga. 30328

Jonathan@realtyresourcescorp.com

Jonathan Javetz
Sales Manager
Office: 404-252-7070
Cell: 678-883-4854
Fax: 404-252-8228

