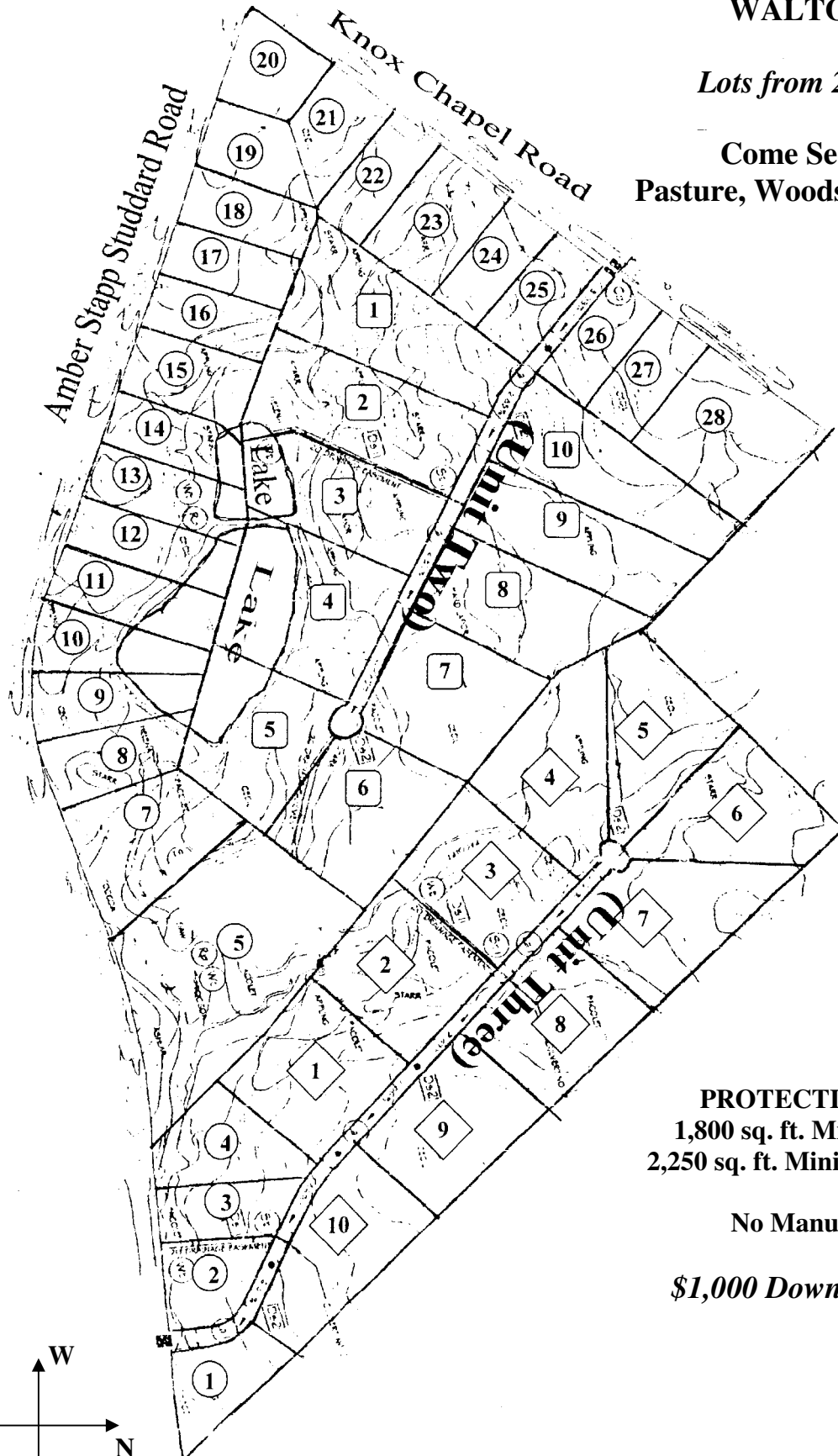


AMBER LAKES

SOCIAL CIRCLE, GEORGIA
WALTON, COUNTY

Lots from 2 acres to 9 acres

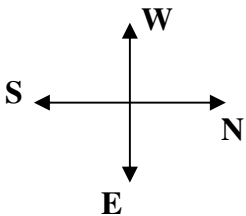
**Come See the Beautiful
Pasture, Woods, Lakes and Streams**



PROTECTIVE COVENANTS

- 1,800 sq. ft. Minimum for Unit One
- 2,250 sq. ft. Minimum for Unit Two and Three
- No Manufactured Homes

\$1,000 Down Owner Financing



Realty Resources Corporation

102 Hammond Drive ♦ Atlanta, Georgia 30328 ♦ (404) 252-7070

AMBER LAKES (Walton County)

Unit Two Lots

<u>LOT#</u>	<u>ACREAGE</u>	<u>TOTAL</u>	<u>SPECIAL FEATURES</u>	<u>MINIMUM DOWN PAYMENT</u>	<u>MIN PAYMENT 0% - 1 YEAR</u>	<u>EST PAYMENT 7.5% - 15 YEARS</u>
1	6.586	\$49,950	Pasture	\$1,000	\$349	\$435
7	5.0	\$44,950	Pasture	\$1,000	\$299	\$380
10	5.299	\$44,950	Cul-de-sac lot	\$1,000	\$299	\$380

*****Pricing and Availability Subject to Change*****

**2,250 SQ. FT. MINIMUM
SITE BUILT HOMES ONLY
NO MANUFACTURED HOMES**

All lots at Units 1 & 3 are sold out

**ALL LOTS NOT LISTED HAVE BEEN SOLD!!!!
U/C MEANS UNDER CONTRACT
10% DISCOUNT FOR CASH
7.5% INTEREST
NO PREPAYMENT PENALTY**

FOR INFORMATION CALL:

**Jonathan Javetz
Office: (404) 252-7070
Cell: (678) 883-4854**

Please visit www.realtyresourcescorp.com for a complete listing of available properties.

AMBER LAKES

SOCIAL CIRCLE, GEORGIA
WALTON, COUNTY

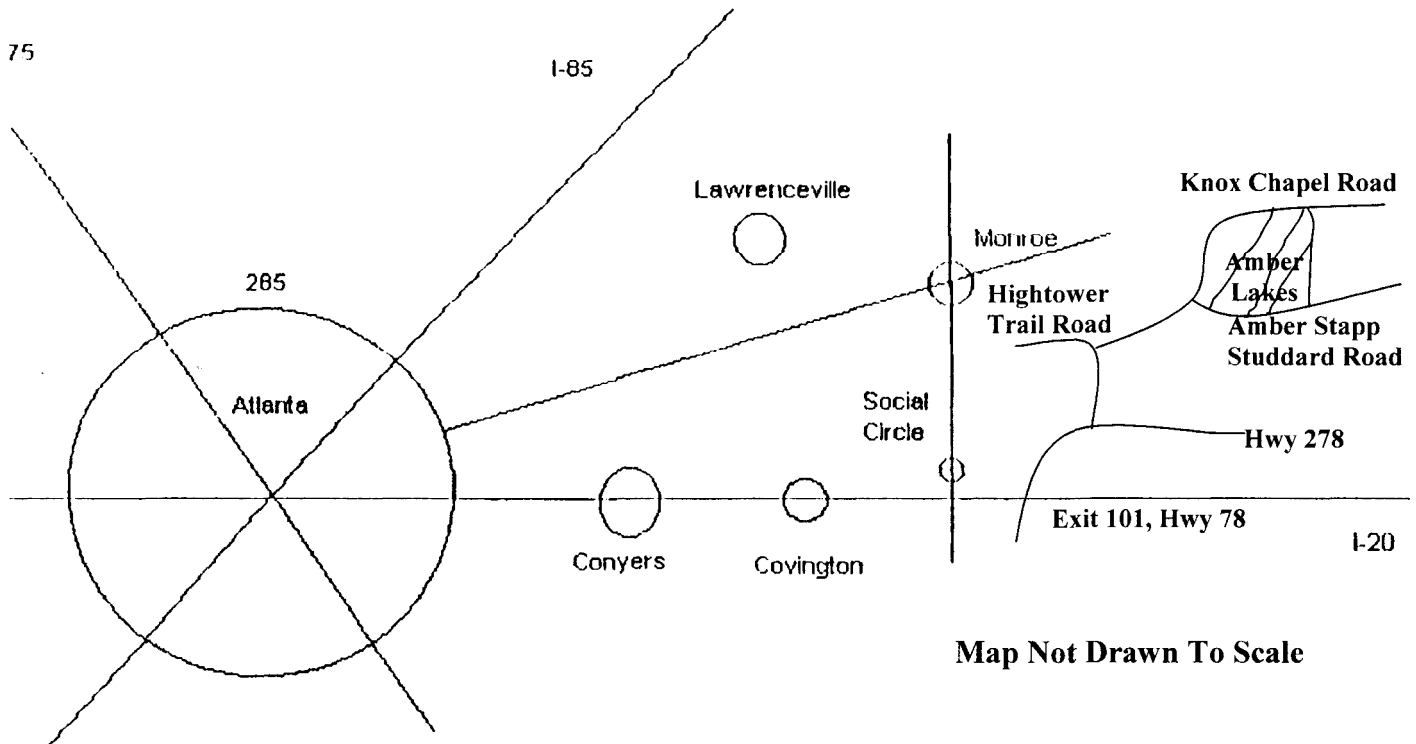
Directions From Atlanta:

Take I-20 East to Exit #101, Highway 278.

At the top of the ramp turn left and go 2.3 miles to Hightower Trail Road
(You will see a Coastal Gas Station and a sign for Willow Springs Church) turn left.

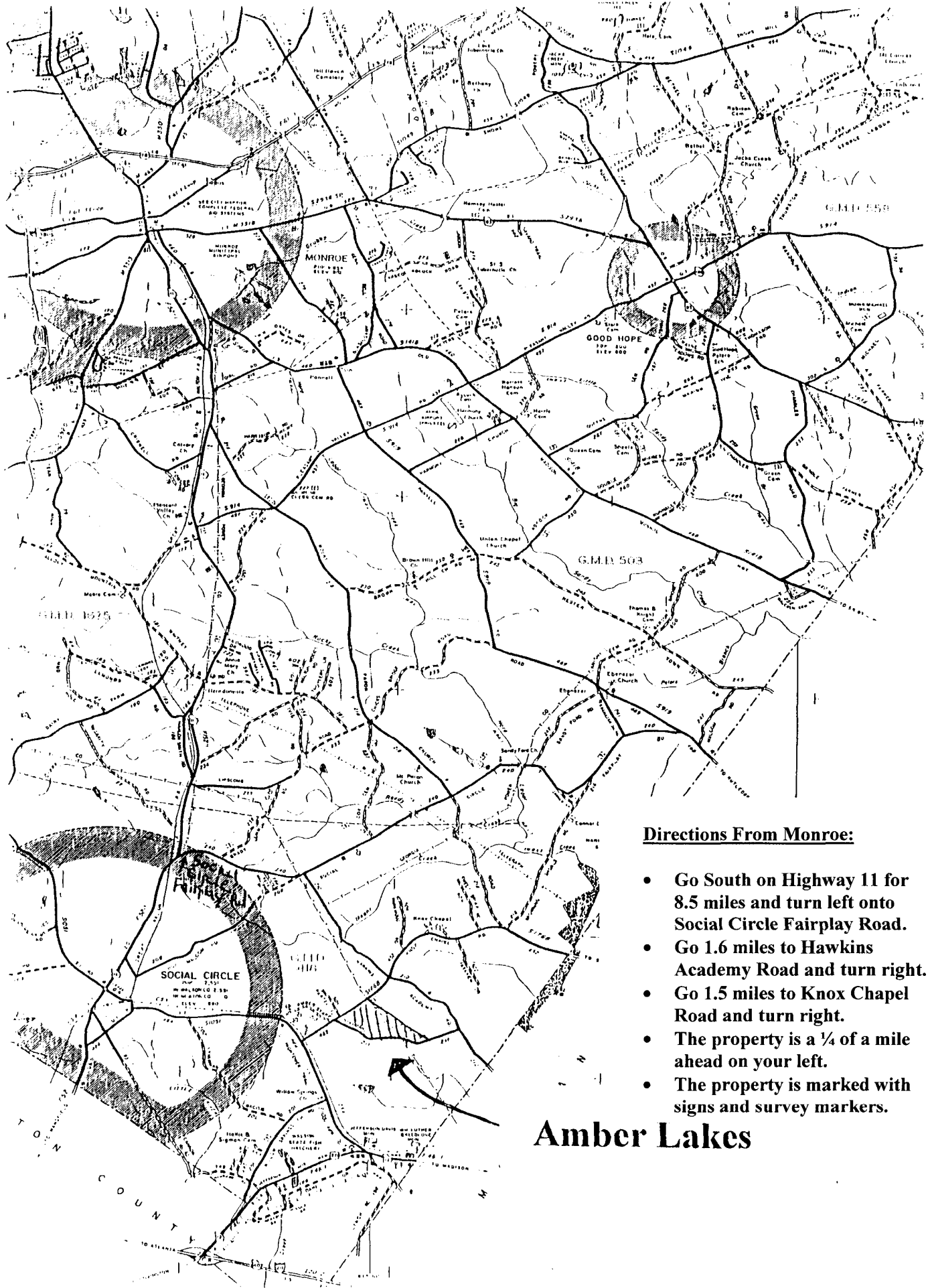
Go 1.5 miles to Knox Chapel Road and turn right.

Go 4/10ths of a mile to the property.



FOR INFORMATION CALL:

Jonathan Javetz
Office: (404) 252-7070
Cell: (687) 883-4854
Or
Joel Shaffner
Home: (770) 923-2164



Directions From Monroe:

- Go South on Highway 11 for 8.5 miles and turn left onto Social Circle Fairplay Road.
- Go 1.6 miles to Hawkins Academy Road and turn right.
- Go 1.5 miles to Knox Chapel Road and turn right.
- The property is a ¼ of a mile ahead on your left.
- The property is marked with signs and survey markers.

Amber Lakes

Plan of the City of Knoxville, Tennessee, showing the proposed location of the Georgia Power Company Transmission Line 200 Easement, as shown on the attached map, and the proposed location of the Georgia Power Company Transmission Line 200 Easement, as shown on the attached map, and the proposed location of the Georgia Power Company Transmission Line 200 Easement, as shown on the attached map.

