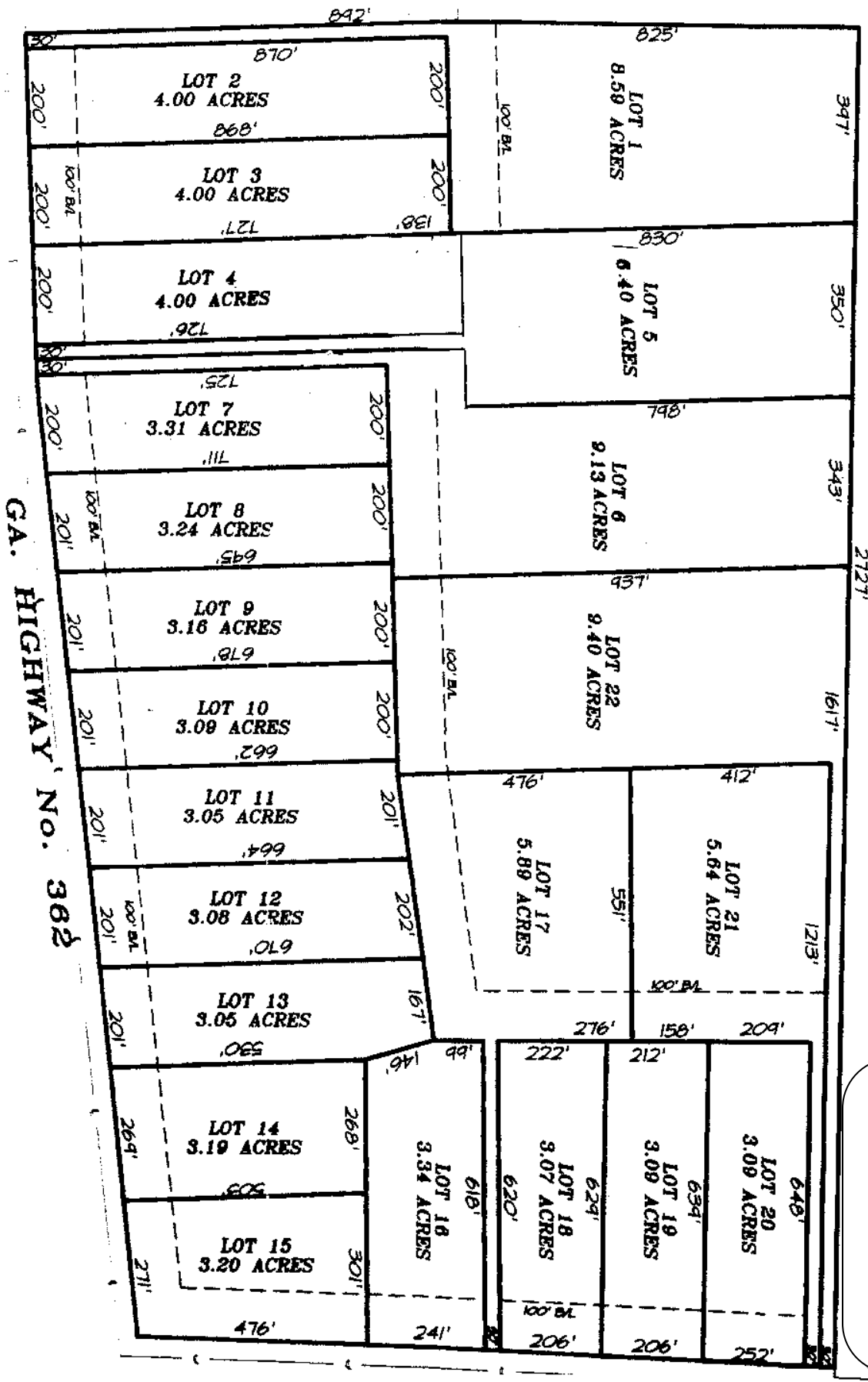


BIRCH CREEK FARMS

Pike County



FOR INFORMATION

CALL:

Jonathon Javetz

Office: (404) 252-7070

Cell: (678) 883-4854

Or

Joel Shaffner

(770) 361-1086

Realty Resources Corporation

102 Hammond Drive ♦ Atlanta, Georgia 30328 ♦ (404) 252-7070

BIRCH CREEK FARMS (Pike County)

	<u>LOT#</u>	<u>ACREAGE</u>	<u>DESCRIPTION</u>	<u>TOTAL</u>	<u>MINIMUM DOWN PAYMENT</u>	<u>MIN PAYMENT 0% - 1 YEAR</u>	<u>EST PAYMENT 9%</u>
	7	3.31	Pasture	\$25,950	\$950	\$199	\$230
	9	3.16	Pasture	\$25,950	\$950	\$199	\$230
	10	3.09	Pasture	\$25,950	\$950	\$199	\$230
	13	3.05	Pasture w/ pecan and fruit trees	\$27,950	\$950	\$199	\$250
	14	3.09	Pasture w/ pecan trees	\$27,950	\$950	\$199	\$250

*****Pricing and Availability Subject to Change*****

*2,000 Square Foot Minimum Heated Living Space
NO MOBILE HOMES*

ALL LOTS NOT LISTED HAVE BEEN SOLD!!!!

U/C MEANS UNDER CONTRACT

10% DISCOUNT FOR CASH

9% INTEREST

NO PREPAYMENT PENALTY

FOR INFORMATION CALL:

**Jonathan Javetz
Office: (404) 252-7070
Cell: (678) 883-4854**

Please visit www.realtyresourcescorp.com for a complete listing of available properties.

DIRECTIONS TO PROPERTY

FROM ATLANTA:

- * Take I – 75 Southbound to the Riverdale Exit to get on Highway 85 South
- * Take 85 South approximately 22 miles
- * Before reaching the Mill, turn left on 85 Connector (heading to Brooks, GA)
- * Go approximately 4 miles through the town of Brooks to Highway 16
- * Cross over Highway 16 onto Hollonville Road
- * Go approximately 5 miles on Hollonville Road until Highway 362.
- * Turn left to take Highway 362 East approximately 4 ½ miles and property will be on the left.
- * Property lots also on the next left turn (Jonathan Roost Road)

FROM GRIFFIN:

- * Take Highway 19/41 South to the exit for Williamson (Highway 362)
- * Take Highway 362 West
- * Follow 362 West into Williamson
- * After small BP station on left, property will appear approximately 1 – 2 miles on right
- * Property fronts Highway 362 and Jonathan Roost Road

FROM PEACHTREE CITY:

- * Take Highway 74 South approximately 8 miles to Highway 85.
- * Take a quick left onto Highway 85 North, and just past the Mill turn right onto Highway 85 Connector to the town of Brooks.
- * Go approximately 4 miles through the town of Brooks to Highway 16
- * Cross over Highway 16 onto Hollonville Road
- * Go approximately 5 miles on Hollonville Road until Highway 362.
- * Turn left onto Highway 362 headed East and go approximately 4 ½ miles and property will be on the left.

FOR INFORMATION CALL:

**Jonathan Javetz
Office: (404) 252-7070
Cell: (678) 883-4854**

Or

**JOEL SHAFFNER
(770) 361-1086**

COVENANTS AND RESTRICTIONS

- 1. Site built homes only.**
- 2. Minimum of 2000 square foot heated living space.**
- 3. Each home must have minimum two car garage.**
- 4. Lots shall not be subdivided.**

*(to receive a complete copy of the Covenants and Restrictions, please contact
Realty Resources Corporation at 404-252-7070)*