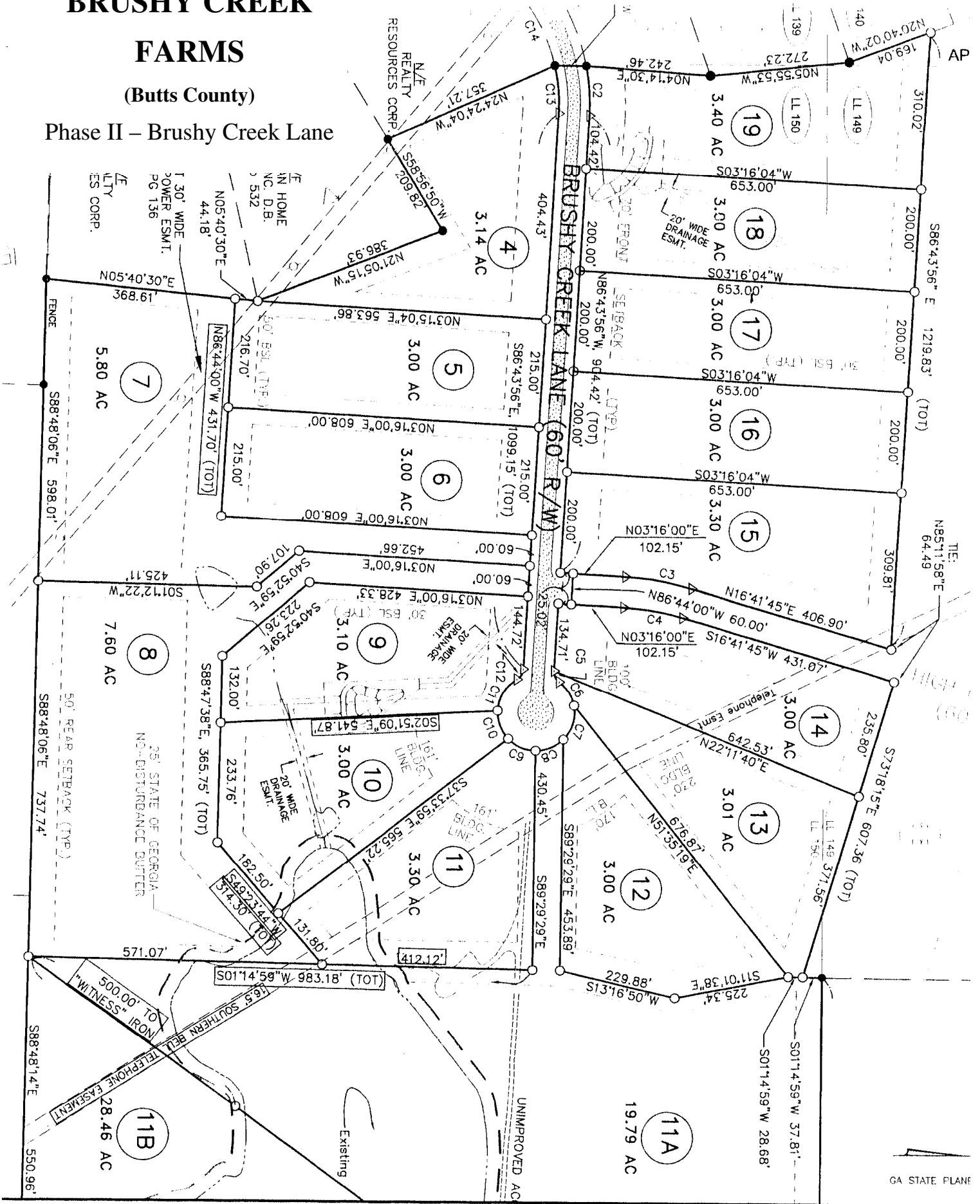


BRUSHY CREEK

FARMS

(Butts County)

Phase II – Brushy Creek Lane



Realty Resources Corporation

102 Hammond Drive ♦ Atlanta, Georgia 30328 ♦ (404) 252-7070

BRUSHY CREEK FARMS **Phase II – BRUSHY CREEK LANE** (Butts County)

<u>LOT#</u>	<u>ACREAGE</u>	<u>SPECIAL FEATURES</u>	<u>TOTAL</u>	<u>1st YEAR MIN</u> <u>MONTHLY</u> <u>PMT @ 0%</u> <u>INTEREST</u>	<u>EST MIN</u> <u>MONTHLY</u> <u>PMT AFTER</u> <u>1ST YEAR</u>
7	5.80	Private Flag Lot, Wooded	\$49,950	\$350	\$480
9	3.10	Wooded, level, lake view	\$36,950	\$265	\$355
12	3.00	Wooded, level, lake view	\$36,950	\$265	\$355
13	3.01	Wood Lake View	\$36,950	\$265	\$355
20	3.19	Pasture & Woods	\$36,950	\$265	\$355

*****Pricing and Availability Subject to Change*****

LOTS 4 – 20 SITE-BUILT HOMES ONLY!
1700 Square Foot Minimum!

PAVED ROADS
COUNTY WATER AVAILABLE
ALL LOTS!

\$950 DOWN ON ALL LOTS

10% DISCOUNT FOR CASH
9% INTEREST
NO PREPAYMENT PENALTY

FOR INFORMATION

CALL:

Jonathan Javetz

Office: (404) 252-7070

Cell: (678) 883-4854

Or

Joel Shaffner

(770) 361-1086

Please visit www.realtyresourcescorp.com for a complete listing of available properties.

Realty Resources Corporation

102 Hammond Drive ♦ Atlanta, Georgia 30328 ♦ (404) 252-7070

BRUSHY CREEK FARMS PHASE III (Butts County)

<u>LOT #</u>	<u>ACREAGE</u>	<u>SPECIAL FEATURES</u>	<u>TOTAL</u>	<u>1st YEAR MIN MONTHLY PMT @ 0% INTEREST</u>	<u>EST MIN MONTHLY PMT AFTER 1ST YEAR</u>
38	3.00	Flat, corner lot	\$38,950	\$290	\$370
39	3.00	Small stream, front yard	\$36,950	\$265	\$355
40	3.00	Hilltop site, level	\$36,950	\$265	\$355
42	3.20	Level home site	\$36,950	\$265	\$355
43	3.00	Slight elevation	\$36,950	\$265	\$355
45	3.10	Lrg trees, slight elevation	\$36,950	\$265	\$355
51	3.01	Level, Cul-de-sac	\$36,950	\$265	\$355
55	3.00	Level, slight elevation	\$36,950	\$265	\$355
56	3.10	Level, slight elevation	\$36,950	\$265	\$355
57	3.10	Level, stream	\$36,950	\$265	\$355
59	3.29	Private cul-de-sac, Stream	\$38,950	\$290	\$370
62	3.00	Level, stream	\$36,950	\$265	\$355

<u>LOT #</u>	<u>ACERAGE</u>	<u>SPECIAL FEATURES</u>	<u>TOTAL</u>	<u>1st YEAR MIN MONTHLY PMT @ 0% INTEREST</u>	<u>EST MIN MONTHLY PMT AFTER 1ST YEAR</u>
64	3.26	Stream, split level site	\$38,950	\$290	\$370
65	4.24	Creek front, basement site	\$49,950	\$355	\$480
66	3.69	Lrg Creek, cul-de-sac	\$45,950	\$330	\$440
69	3.05	Creek, Basement site	\$38,950	\$290	\$370
70	3.00	Creek, basement site	\$38,950	\$290	\$370
71	3.20	Creek, basement site	\$38,950	\$290	\$370
72	3.00	Level, road frontage	\$38,950	\$290	\$370
73	3.30	Level, lrg trees, creek front	\$45,950	\$330	\$440
74	3.40	Lrg trees, creek front	\$45,950	\$330	\$440
76	3.00	Lrg creek, hillside view	\$45,950	\$330	\$440
77	3.00	Creek front, split level site	\$45,950	\$330	\$440
78	3.00	Small creek, split level site	\$40,950	\$300	\$390
79	3.10	Level	\$40,950	\$300	\$390
80	3.40	Level, creek front	\$45,950	\$330	\$440
81	3.30	Level, creek front	\$45,950	\$330	\$440
82	3.19	Creek, basement site, yard	\$45,950	\$330	\$440
83	3.24	Creek front, basement site	\$45,950	\$330	\$440

Paved Roads and County Water throughout!

Majority of Lots are Wooded!

SITE BUILT HOMES ONLY!

\$950 DOWN ON ALL LOTS

10% Discount for Cash!

9% Interest

NO PREPAYMENT PENALTY

****PRICES SUBJECT TO CHANGE****

“U/C” – Under Contract

RESERVE YOURS TODAY!

FOR INFORMATION

CALL:

**Jonathan Javetz
Office: (404) 252-7070
Cell: (678) 883-4854**

OR

**Joel Shaffner
(770) 361 1086 cell**

BRUSHY CREEK FARMS

Directions From Atlanta

- Take I-75 South to exit #201, Hwy 36
- Turn Right
- Go about 1 mile and Turn Right onto High Falls Road
- Go about 1 ½ miles and Turn Right onto Chappell Mill Road
- Go about ½ mile and Bear Right on either Brushy Creek Lane or Fenner Road
- Lots are on your right (Phase I); Lots on both sides for Phase II.

Directions From Jackson

- Take Hwy 36 West
- Cross I-75 and go about 1 mile and Turn Right onto High Falls Road
- Go about 1 ½ miles and Turn Right onto Chappell Mill Road
- Go about ½ mile and Bear Right on either Brushy Creek Lane or Fenner Road
- Lots are on your right (Phase I); Lots on both sides for Phase II.

Directions From Griffin

- Take Hwy 16 East towards I-75
- Turn Right onto High Falls Road
- Go about 1 ½ miles and Bear Right to stay on High Falls Road
- Once you cross into Butts County go about ¾ mile
- Turn Left on Fenner Road or Brushy Creek Lane
- Lots are on your right (Phase I); Lots on both sides for Phase II

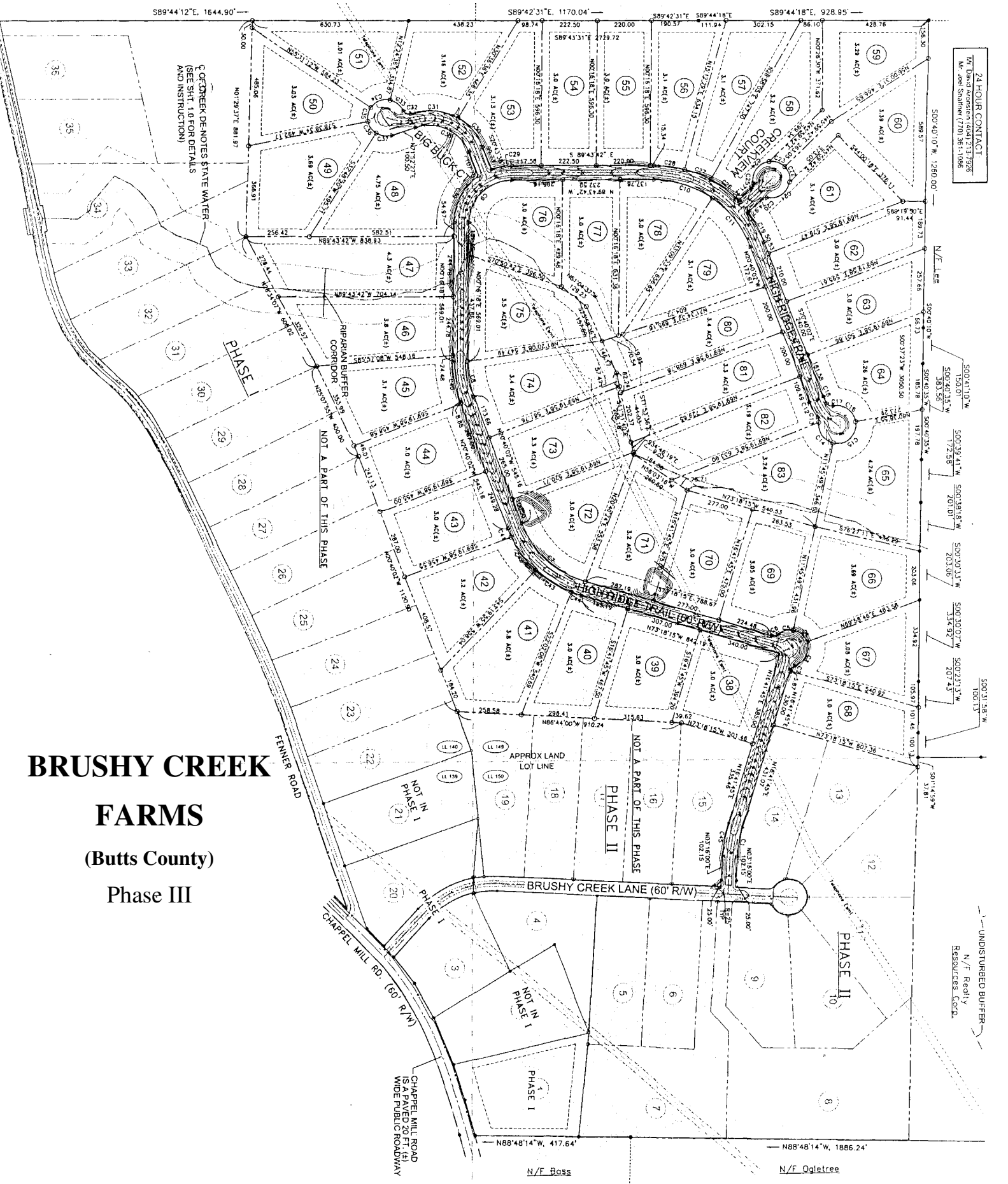
COVENANTS AND RESTRICTIONS

- 1. 1700 square foot minimum of heated living space; any dwelling of two levels or more shall have a first floor minimum of 1250 square feet.**
- 2. All lots shall be site built homes ONLY!**

(For a copy of the complete Covenants and Restrictions, please contact Realty Resources Corporation at 404-252-7070)

BRUSHY CREEK FARMS

(Butts County)
Phase III



24 HOUR CONTACT
Tim D. Anderson (404) 213-7926
Mr. John Sharkey (770) 361-1086

UNDISTURBED BUFFER
N/F Reddy
Resources, Corp.

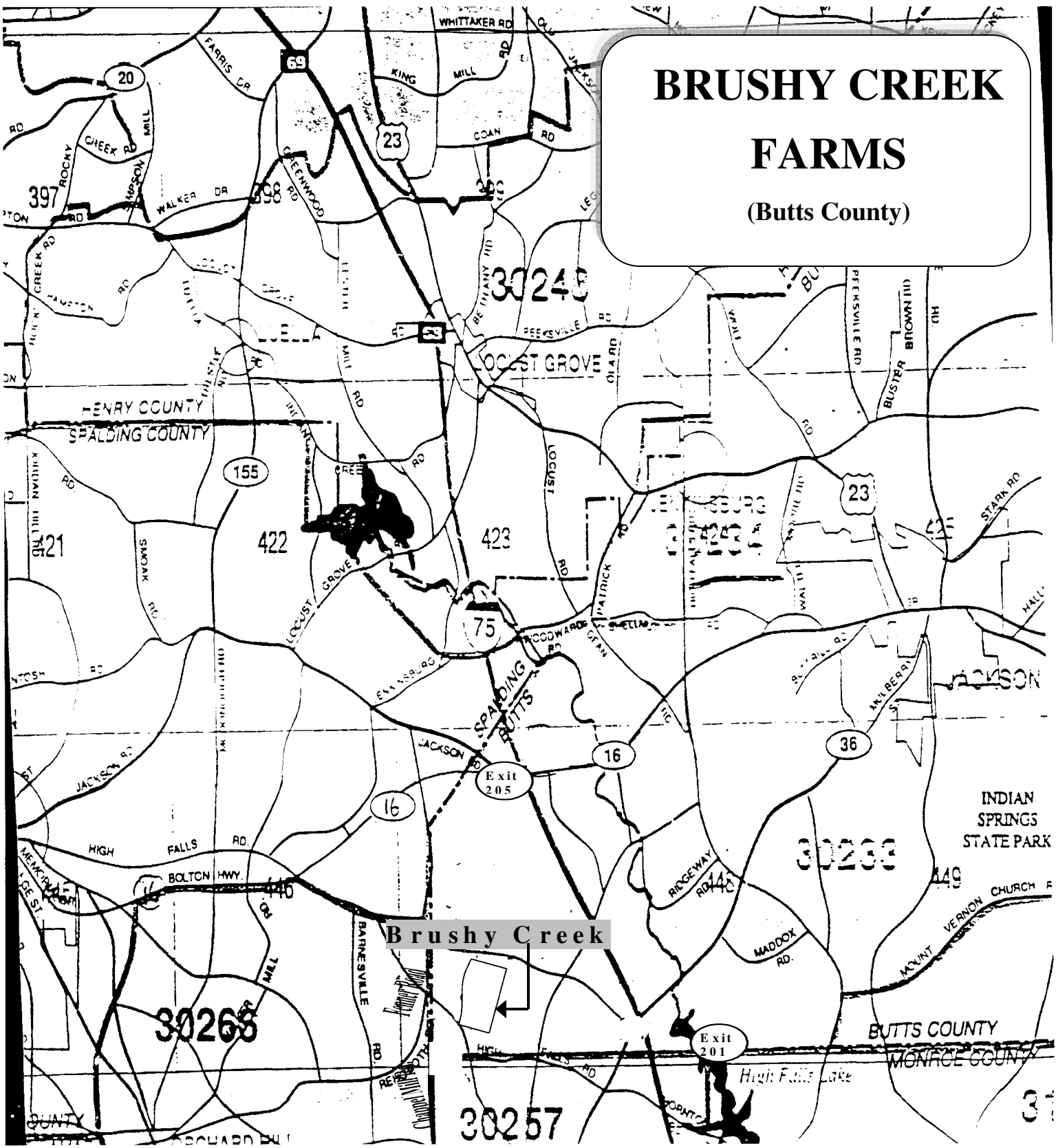
N/F Boss

N/F Ogletree

BRUSHY CREEK

FARMS

(Butts County)



Hwy 36