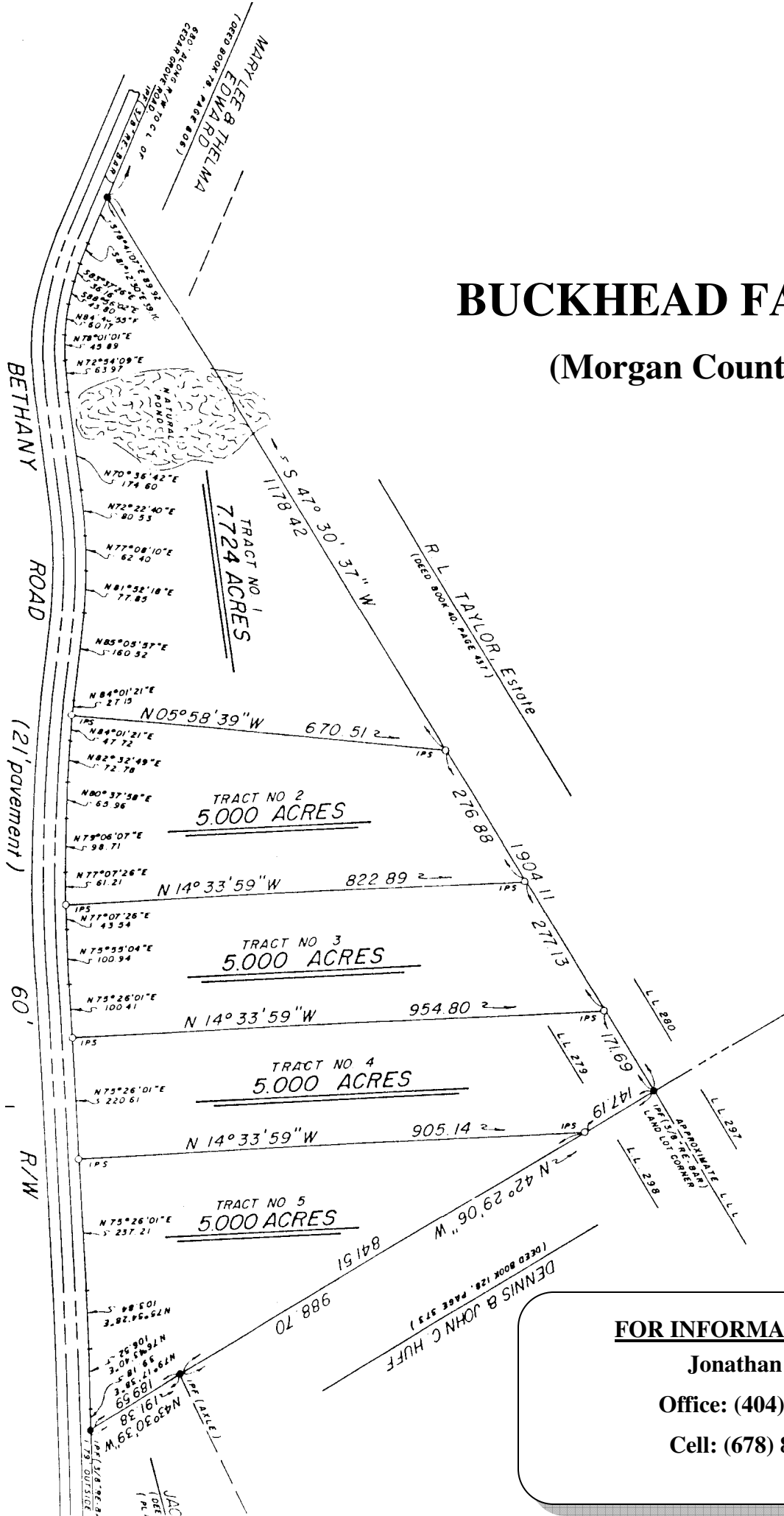


BUCKHEAD FARMS

(Morgan County)



FOR INFORMATION CALL:
Jonathan Javetz
Office: (404) 252-7070
Cell: (678) 883-4854

Realty Resources Corporation

102 Hammond Drive ♦ Atlanta, Georgia 30328 ♦ (404) 252-7070

BUCKHEAD FARMS (Morgan County)

	<u>LOT#</u>	<u>ACREAGE</u>	<u>TOTAL</u>	<u>MINIMUM DOWN PAYMENT</u>	<u>MIN PAYMENT 0% - 1 YEAR</u>	<u>EST PAYMENT 9% 14 yrs</u>
	5	5.00	\$24,950	\$500	\$199	\$240

******Pricing and Availability Subject to Change******

ALL LOTS NOT LISTED HAVE BEEN SOLD!!!!

U/C MEANS UNDER CONTRACT

10% DISCOUNT FOR CASH

9% INTEREST

NO PREPAYMENT PENALTY

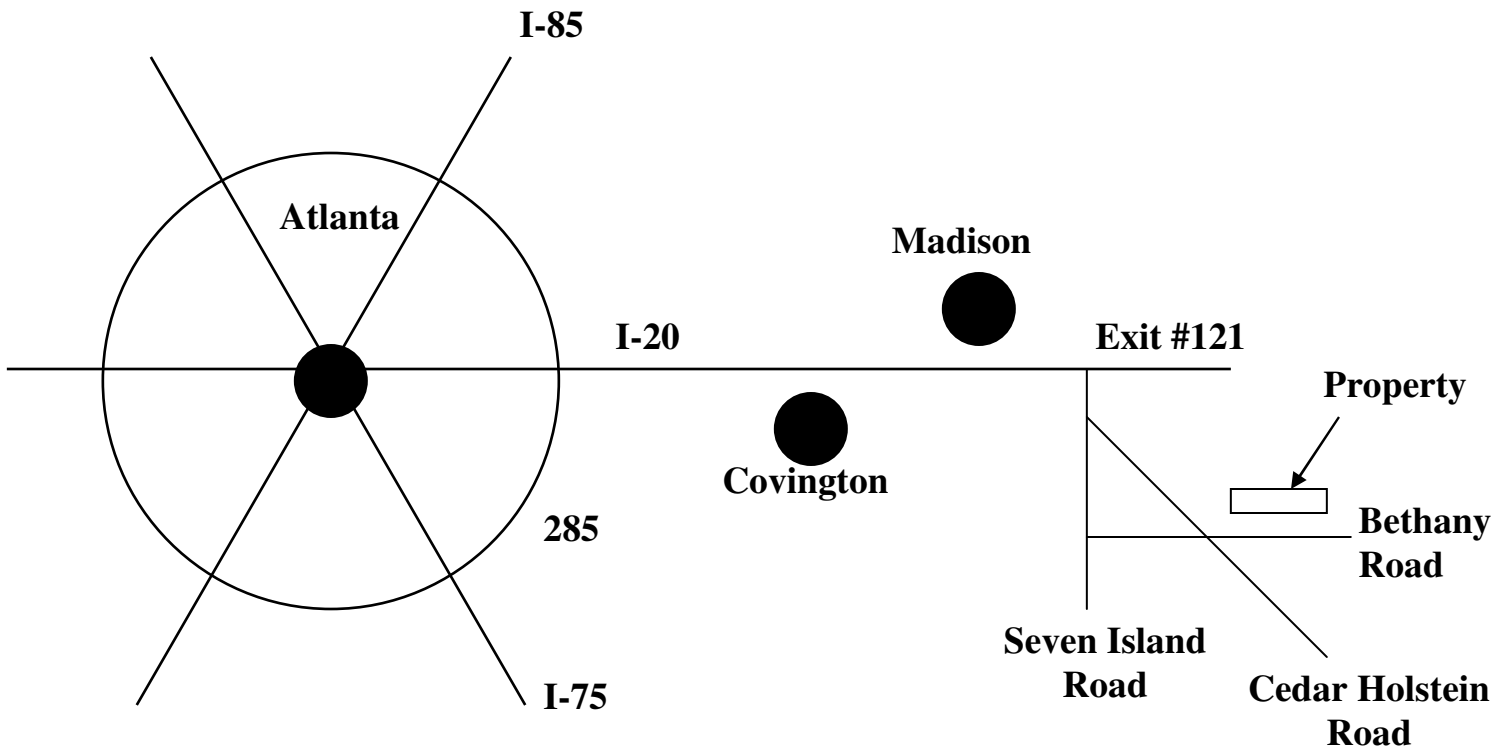
FOR INFORMATION CALL:

Jonathan Javetz

Office: (404) 252-7070

Cell: (678) 883-4854

BUCKHEAD FARMS



MAP NOT DRAWN TO SCALE

Directions to Buckhead Farms

From Atlanta:

Take I-20 East to Exit #121, Buckhead.

At the top of the ramp turn Right onto Seven Island Road.

Go 2 miles to stop sign and turn Left onto Bethany Road.

Go 1 ½ miles to stop sign, stay Straight.

The property is 1/10 of a mile down on the left.

The lots are marked with signs and survey tape for your convenience.

