

Realty Resources Corporation

102 Hammond Drive ♦ Atlanta, Georgia 30328 ♦ (404) 252-7070

Cherry Creek (Gilmer County)

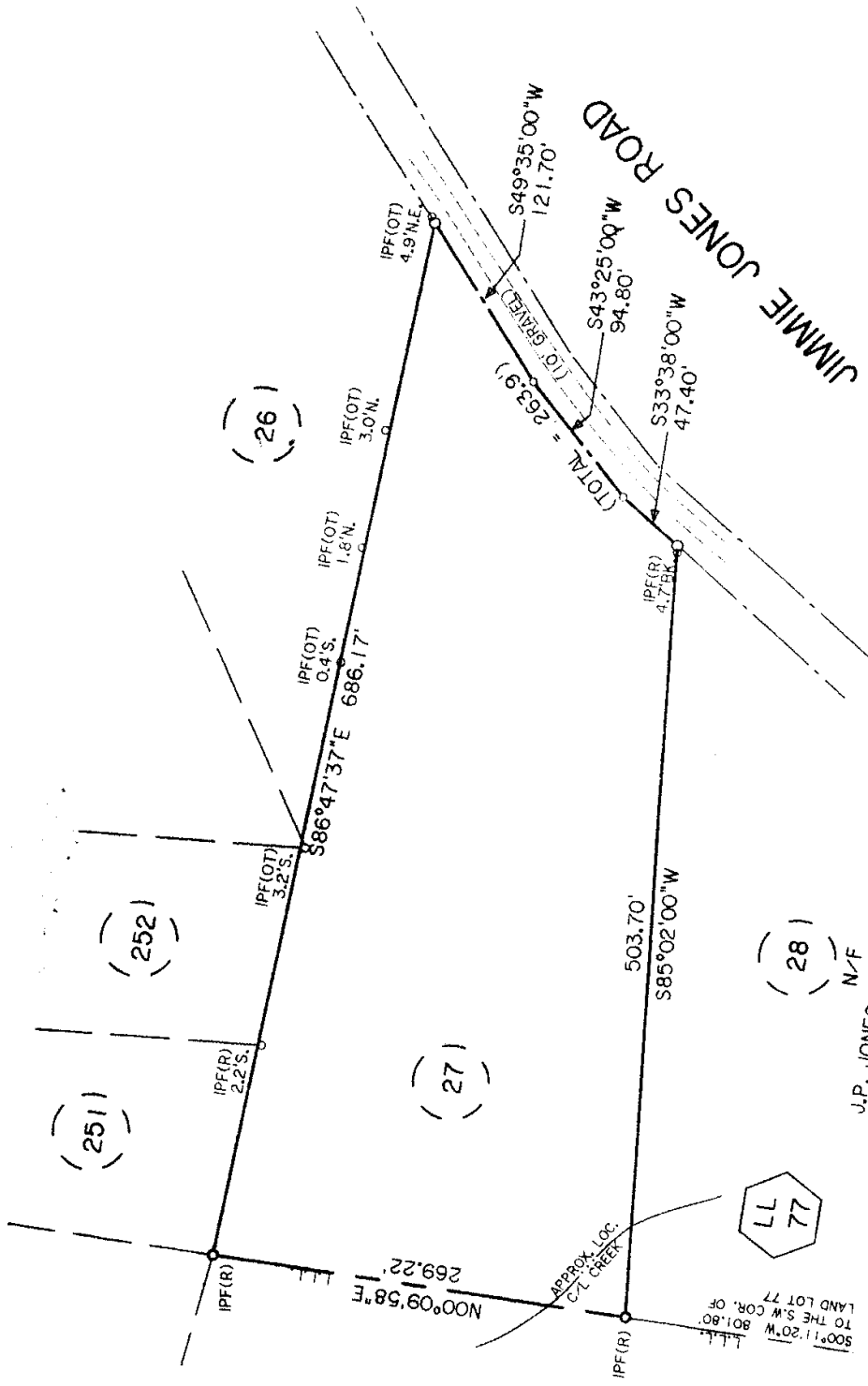
<u>LOT#</u>	<u>ACREAGE</u>	<u>TOTAL</u>	<u>MINIMUM DOWN PAYMENT</u>	<u>Min Payment 1st 12 months 0% interest</u>	<u>Min Payment remaining 168 months 9% int</u>
27	3.07	\$19,950	\$500	\$125	\$195

*****Pricing and Availability Subject to Change*****

10% DISCOUNT FOR CASH
9% INTERST
NO PREPAYMENT PENALTY

FOR INFORMATION CALL:
Jonathan Javetz
Office: 404-252-7070
Cell: 678-883-4854

Please visit www.realtyresourcescorp.com for a complete listing of available properties.



J.P. JONES & JIMMIE O. JONES
N/F

DIRECTIONS TO PROPERTY

FROM ATLANTA:

- Take 75 North to 575 North
- 575 turns into Hwy 515
- Turn Left onto Maxwell Rd
- Turn Left onto Bear Paw Rd
- Go straight onto Jimmie Jones Rd.

There is no sign for Jimmie Jones Rd. You will see a sign to turn right to go to a cemetery. Don't turn, go straight past this sign, this is Jimmie Jones Road. Go down Jimmie Jones Rd and the property will be on your right.

FOR INFORMATION CALL:

Jonathan Javetz
Office: 404-252-7070
Cell: 678-883-4854