

Realty Resources Corporation

102 Hammond Drive ♦ Atlanta, Georgia 30328 ♦ (404) 252-7070

COUNTRYSIDE FARMS (Bartow County)

	<u>LOT#</u>	<u>ACREAGE</u>	<u>TOTAL</u>	<u>MINIMUM DOWN PAYMENT</u>	<u>PAYMENT 0% - 1 YEAR</u>	<u>EST PAYMENT 9% - 14 YEARS</u>
	3	5.153	\$24,950	\$500	\$199	\$250
	6	10.089	\$39,900	\$500	\$299	\$375

*****Pricing and Availability Subject to Change*****

ALL LOTS NOT LISTED HAVE BEEN SOLD!!
U/C MEANS UNDER CONTRACT
10% DISCOUNT FOR CASH
9% INTEREST
NO PREPAYMENT PENALTY

FOR INFORMATION CALL:

Jonathan Javetz

Office: (404) 252-7070

Cell: (678) 883-4854

DIRECTIONS TO COUNTRYSIDE FARMS

From Atlanta:

Take I-75 North to Exit #306, Highway 140

Turn Left onto Highway 140 West

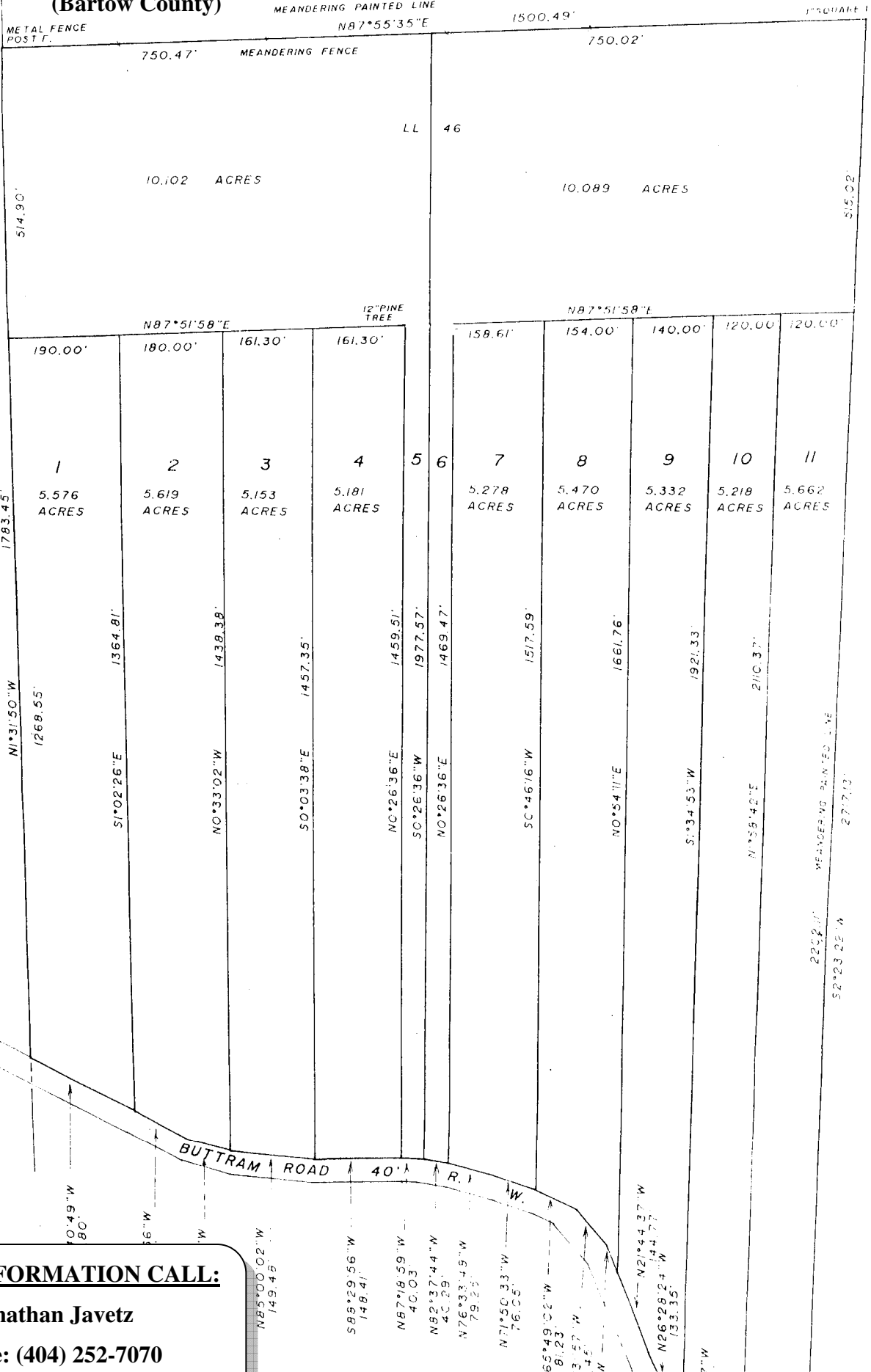
Go 6.2 miles and turn Left onto Buttram Road (you will cross into Floyd County)

Go 1.5 miles, the property will be on your Left

Please visit www.realtyresourcescorp.com for a complete listing of available properties.

Countryside Farms (Bartow County)

LL 47 N/H VEACH

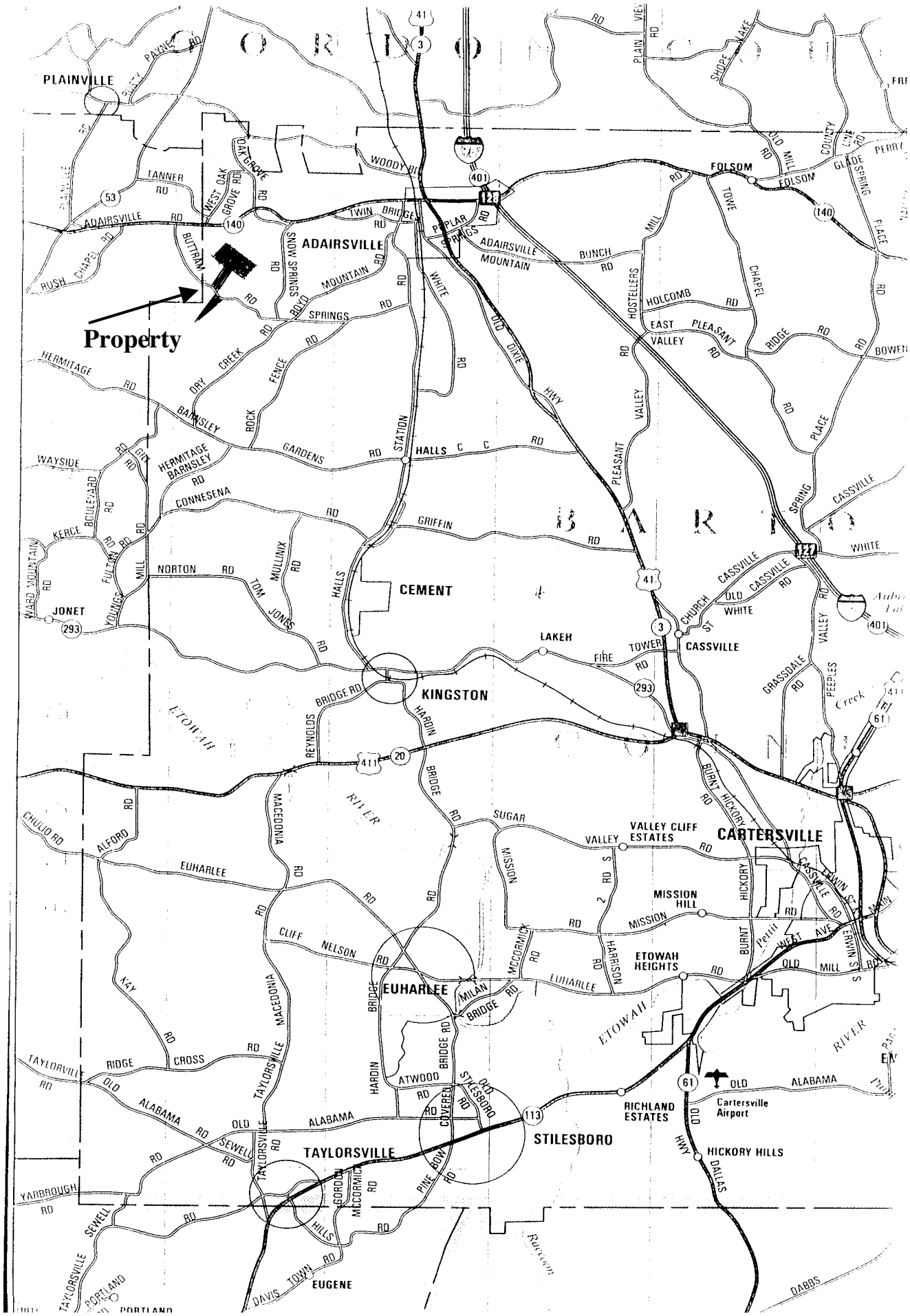


FOR INFORMATION CALL:

Jonathan Javetz

Office: (404) 252-7070

Cell: (678) 883-4854



Property

PLAINVILLE

ADAIRSVILLE

ADAIRSVILLE

FOLSOM

CEMENT

KINGSTON

CARTERSVILLE

TAYLORSVILLE

STILESBORO

RICHLAND ESTATES

HICKORY HILLS

EUGENE

YARBROUGH

TAYLORSVILLE

PORTLAND

DABBS

HERMITAGE

WAYSIDE

KERCE

JONET

CHULUD

ALFORD

EUHARLEE

TAYLORSVILLE

ALABAMA

SEWELL

PORTLAND

HERMITAGE BARNESLEY

CONNESENA

NORTON

MILL

MACEDONIA

EUHARLEE

CLIFF

TAYLORSVILLE

ALABAMA

SEWELL

PORTLAND

DRY CREEK

BAINESLEY

GARDENS

MULLINK

REYNOLDS

MACEDONIA

EUHARLEE

NELSON

TAYLORSVILLE

ALABAMA

SEWELL

PORTLAND

ROCK

STATION

HALLS C C

GRIFFIN

BRIDGE

MACEDONIA

EUHARLEE

CLIFF

TAYLORSVILLE

ALABAMA

SEWELL

PORTLAND

FENCE

GARDENS

HALLS C C

GRIFFIN

BRIDGE

MACEDONIA

EUHARLEE

NELSON

TAYLORSVILLE

ALABAMA

SEWELL

PORTLAND

WOODY

STATION

HALLS C C

GRIFFIN

BRIDGE

MACEDONIA

EUHARLEE

NELSON

TAYLORSVILLE

ALABAMA

SEWELL

PORTLAND

WHITE

STATION

HALLS C C

GRIFFIN

BRIDGE

MACEDONIA

EUHARLEE

NELSON

TAYLORSVILLE

ALABAMA

SEWELL

PORTLAND

ADAIRSVILLE MOUNTAIN

ADAIRSVILLE MOUNTAIN

HALLS C C

GRIFFIN

BRIDGE

MACEDONIA

EUHARLEE

NELSON

TAYLORSVILLE

ALABAMA

SEWELL

PORTLAND

ADAIRSVILLE MOUNTAIN

ADAIRSVILLE MOUNTAIN

HALLS C C

GRIFFIN

BRIDGE

MACEDONIA

EUHARLEE

NELSON

TAYLORSVILLE

ALABAMA

SEWELL

PORTLAND

ADAIRSVILLE MOUNTAIN

ADAIRSVILLE MOUNTAIN

HALLS C C

GRIFFIN

BRIDGE

MACEDONIA

EUHARLEE

NELSON

TAYLORSVILLE

ALABAMA

SEWELL

PORTLAND

ADAIRSVILLE MOUNTAIN

ADAIRSVILLE MOUNTAIN

HALLS C C

GRIFFIN

BRIDGE

MACEDONIA

EUHARLEE

NELSON

TAYLORSVILLE

ALABAMA

SEWELL

PORTLAND

ADAIRSVILLE MOUNTAIN

ADAIRSVILLE MOUNTAIN

HALLS C C

GRIFFIN

BRIDGE

MACEDONIA

EUHARLEE

NELSON

TAYLORSVILLE

ALABAMA

SEWELL

PORTLAND

ADAIRSVILLE MOUNTAIN

ADAIRSVILLE MOUNTAIN

HALLS C C

GRIFFIN

BRIDGE

MACEDONIA

EUHARLEE

NELSON

TAYLORSVILLE

ALABAMA

SEWELL

PORTLAND

ADAIRSVILLE MOUNTAIN

ADAIRSVILLE MOUNTAIN

HALLS C C

GRIFFIN

BRIDGE

MACEDONIA

EUHARLEE

NELSON

TAYLORSVILLE

ALABAMA

SEWELL

PORTLAND