

Realty Resources Corporation

102 Hammond Drive ♦ Atlanta, Georgia 30328 ♦ (404) 252-7070

COWETA CORNERS (Coweta County)

Lot #	Acreage	Price	Down Payment	Min Payment at 0% interest for 12 months	Min Payment at 7% interest for 183 months
1/2/3	30.45	\$119,000	\$2,500	\$950	\$950



FOR INFORMATION CALL:

Jonathan Javetz

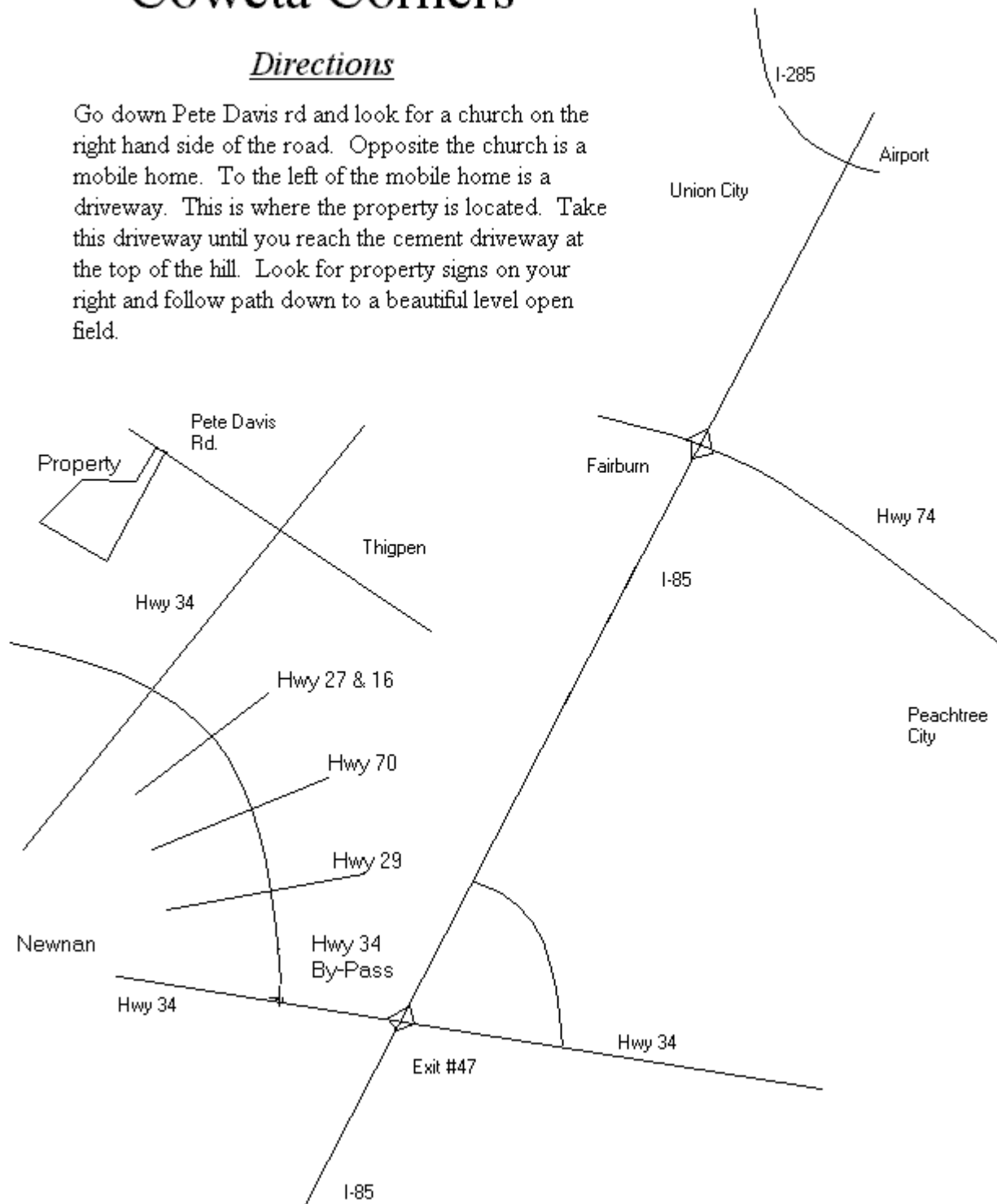
Office: (404) 252-7070

Cell: (678) 883-4854

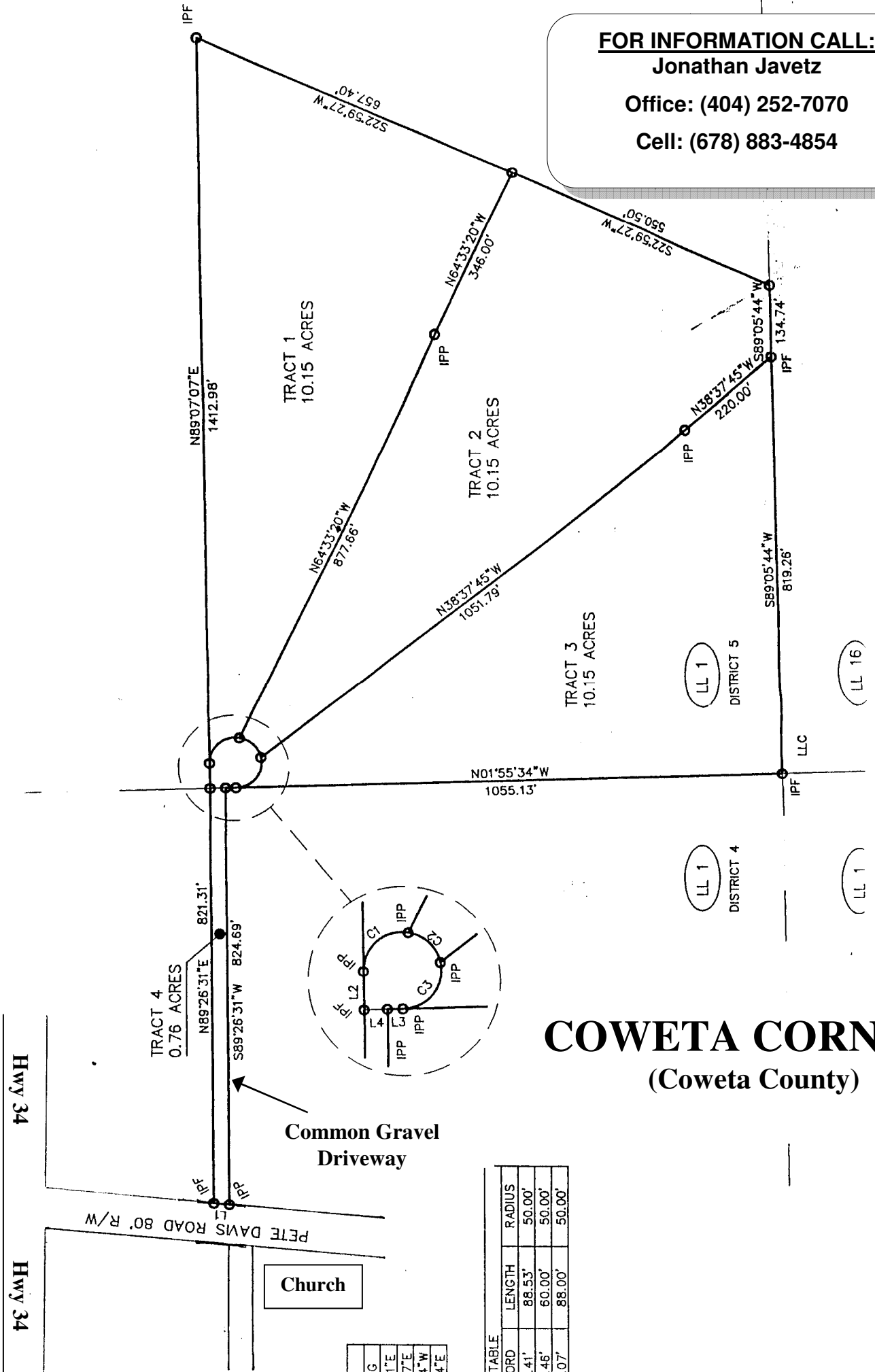
Coweta Corners

Directions

Go down Pete Davis rd and look for a church on the right hand side of the road. Opposite the church is a mobile home. To the left of the mobile home is a driveway. This is where the property is located. Take this driveway until you reach the cement driveway at the top of the hill. Look for property signs on your right and follow path down to a beautiful level open field.



FOR INFORMATION CALL:
Jonathan Javetz
Office: (404) 252-7070
Cell: (678) 883-4854



COWETA CORNERS

(Coweta County)

ORD	LENGTH	RADIUS
.41'	88.53'	50.00'
.46'	60.00'	50.00'
.07'	88.00'	50.00'

IG
1"E
7"E
4"W
4"E