

## KEYS FERRY ESTATES

*Keys Ferry Estates is a blend of suburban and rural living in growing Butts County.*

*The acreage home sites are a mixture of pasture and woods.*

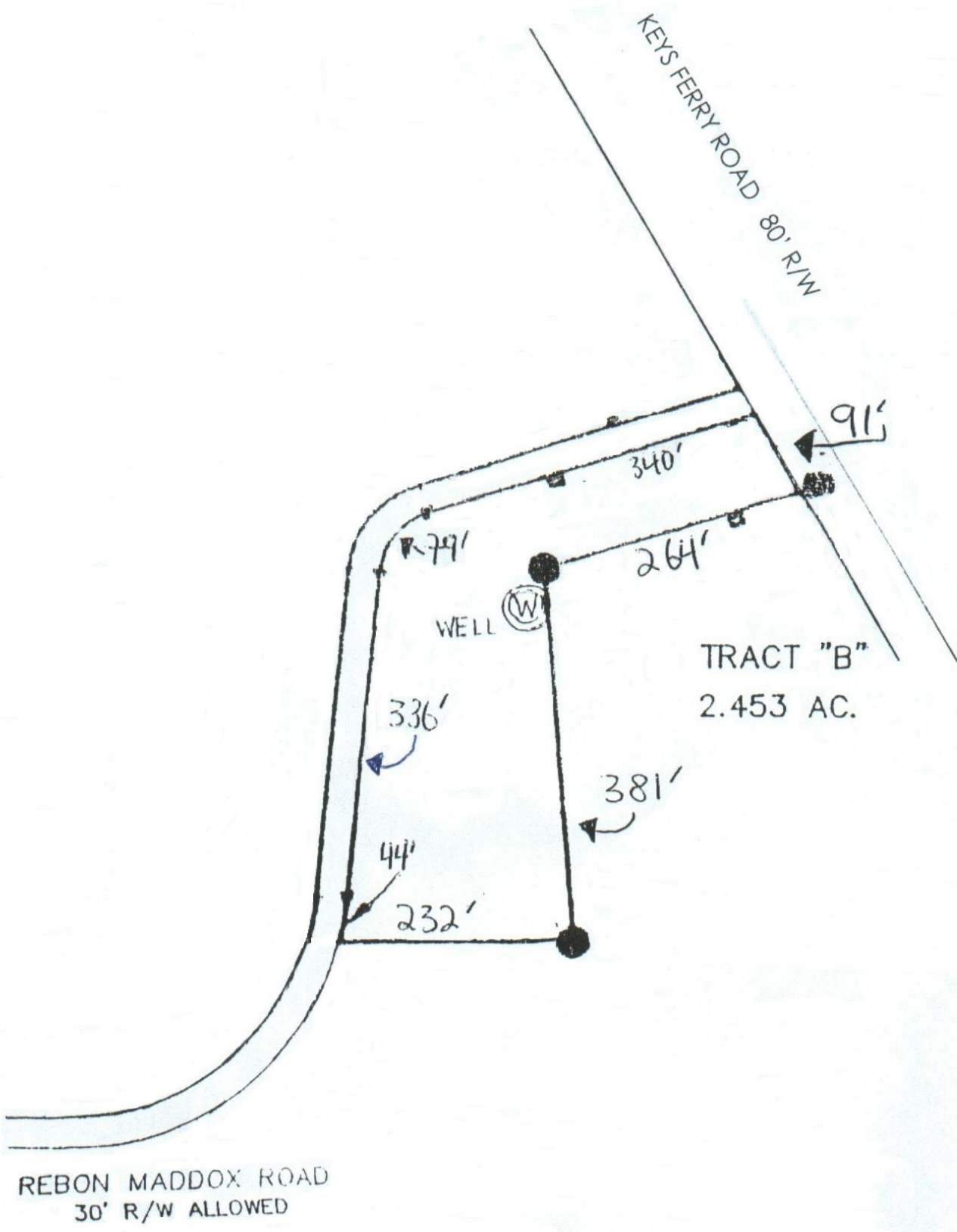
*Come see the beautiful home sites awaiting you at Keys Ferry Estates.*

### FOR INFORMATION CALL:

**Jonathan Javetz**  
**Office: (404) 252-7070**  
**Cell: (678) 883-4854**

To Highway 36  
 ←

To Highway 81  
 →



KEYS FERRY ROAD 80' R/W

91'

340'

264'

WELL (W)

TRACT "B"  
2.453 AC.

336'

381'

44'

232'

REBON MADDOX ROAD  
30' R/W ALLOWED

# Realty Resources Corporation

102 Hammond Drive ♦ Atlanta, Georgia 30328 ♦ (404) 252-7070

## KEYS FERRY ESTATES (Butts County)

<u>LOT#</u>	<u>ACREAGE</u>	<u>TOTAL</u>	<u>MINIMUM DOWN PAYMENT</u>	<u>PAYMENT 0% - 1 YEAR</u>	<u>EST PAYMENT 9%</u>
B	2.453	\$18,950	\$495	\$149	\$175

\*\*\*\*\*Pricing and Availability Subject to Change\*\*\*\*\*

*COUNTY WATER AVAILABLE  
SELLER WILL FINANCE SEPTIC TANK  
DOUBLE WIDE MOBILE HOMES ALLOWED*

**ALL LOTS NOT LISTED HAVE BEEN SOLD!!!!  
U/C MEANS UNDER CONTRACT  
10% DISCOUNT FOR CASH  
9% INTEREST  
NO PREPAYMENT PENALTY**

**FOR INFORMATION CALL:**

**Jonathan Javetz**

**Office: (404) 252-7070**

**Cell: (678) 883-4854**

Please visit [www.realtyresourcescorp.com](http://www.realtyresourcescorp.com) for a complete listing of available properties.

# KEYS FERRY ESTATES

## DIRECTIONS TO KEYS FERRY ESTATES

### FROM ATLANTA

Take I-75 South to Exit #218 (Highway 81) turn left and cross the Highway.

You are now heading towards McDonough.

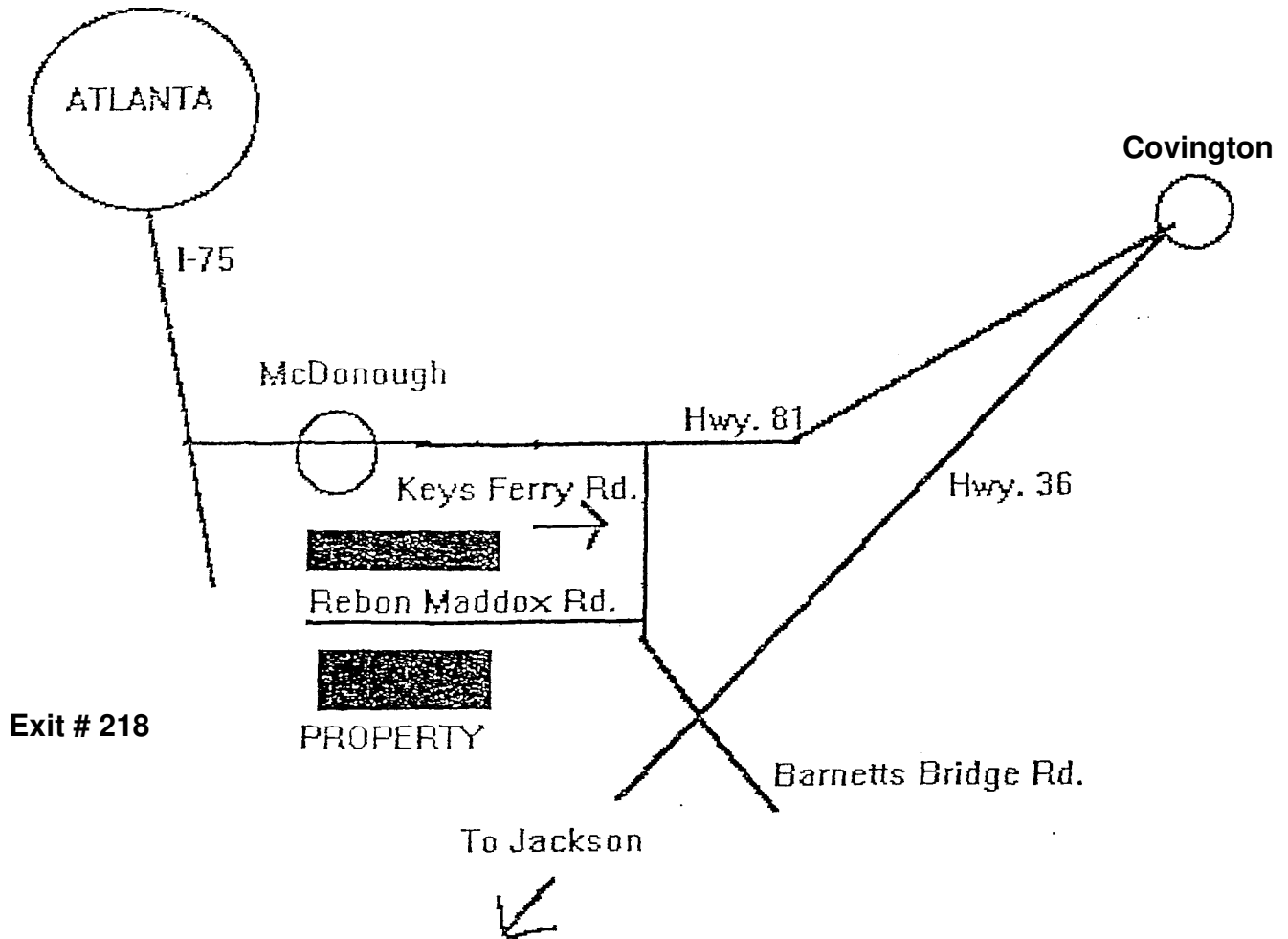
Continue on Highway 81 through the Town Square.

Go approximately 7.5 miles and turn right onto Keys Ferry Road.

Go 7.5 to 8 miles and turn right onto Rebon Maddox Road.

Continue down the road until you see the signs.

The property is on both sides of the road.



### FOR INFORMATION CALL:

Jonathan Javetz

Office: (404) 252-7070

Cell: (678) 883-4854