

# Realty Resources Corporation

102 Hammond Drive ♦ Atlanta, Georgia 30328 ♦ (404) 252-7070

## Perry Mountain (Bartow County)

	<u>LOT#</u>	<u>ACREAGE</u>	<u>TOTAL</u>	<u>MINIMUM DOWN PAYMENT</u>	<u>MIN PAYMENT 0% - 1 YEAR</u>	<u>EST PAYMENT 7% - 15 YEARS</u>
	10	12.14	\$69,950	\$950	\$399	\$590
	11	11.24	\$69,950	\$950	\$399	\$590
	16	16.69	\$89,950	\$950	\$550	\$755

\*\*\*\*\*Pricing and Availability Subject to Change\*\*\*\*\*

**ALL LOTS NOT LISTED HAVE BEEN SOLD!!!!**

**U/C MEANS UNDER CONTRACT**

**10% DISCOUNT FOR CASH**

**7 % INTEREST**

**NO PREPAYMENT PENALTY**

**ALL LOTS SITE BUILT HOMES ONLY!!!**

**For Information Call:**

Jonathan Javetz

Office: 404-252-7070

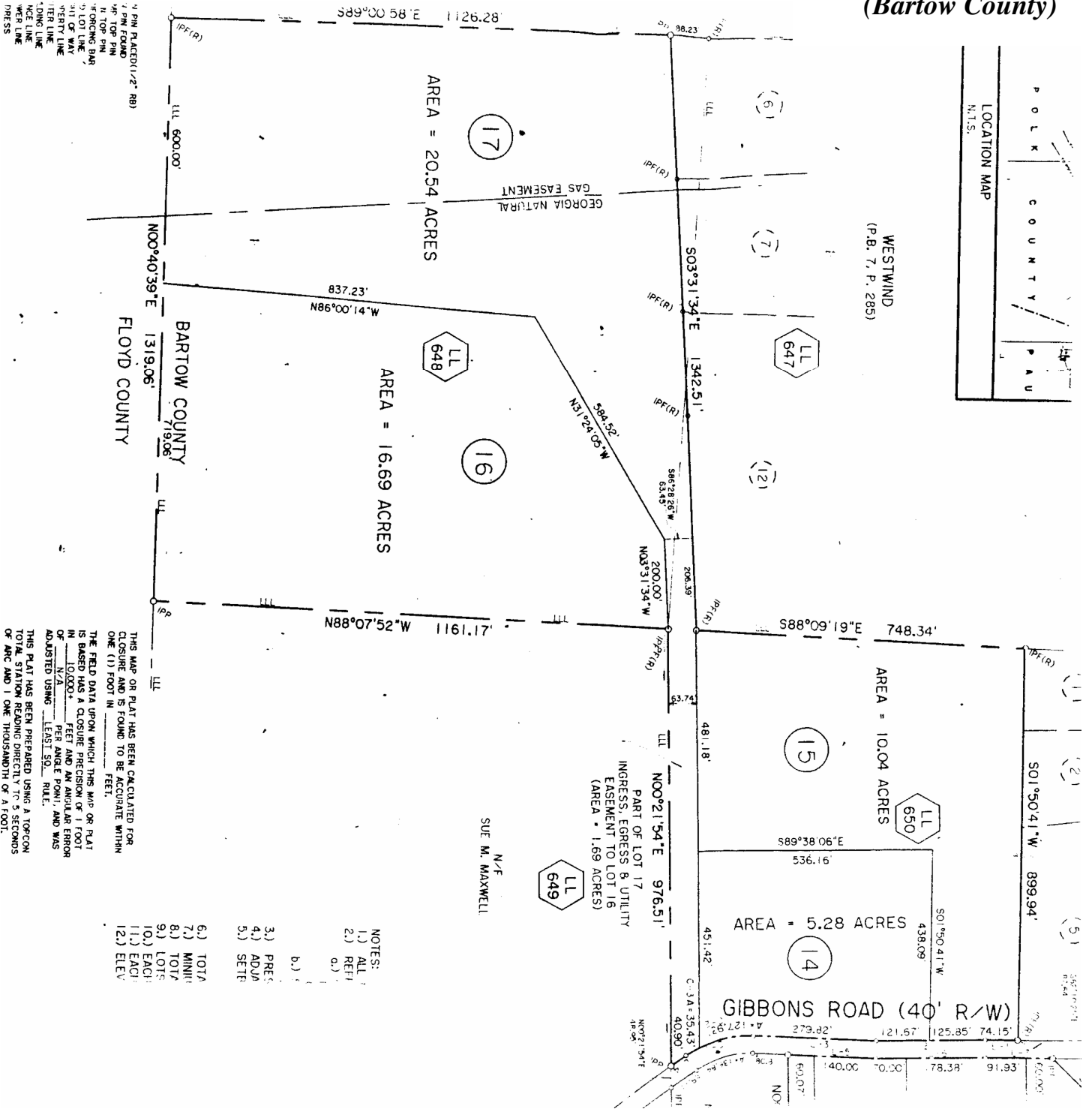
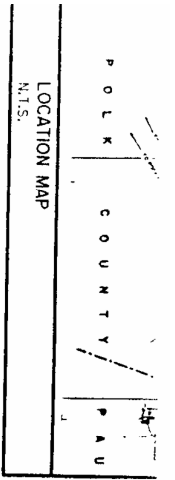
Cell: 678-883-4854

Please visit [www.realtyresourcescorp.com](http://www.realtyresourcescorp.com) for a complete listing of available properties.



# PERRY MOUNTAIN

(Bartow County)



# PERRY MOUNTAIN

(Bartow County)

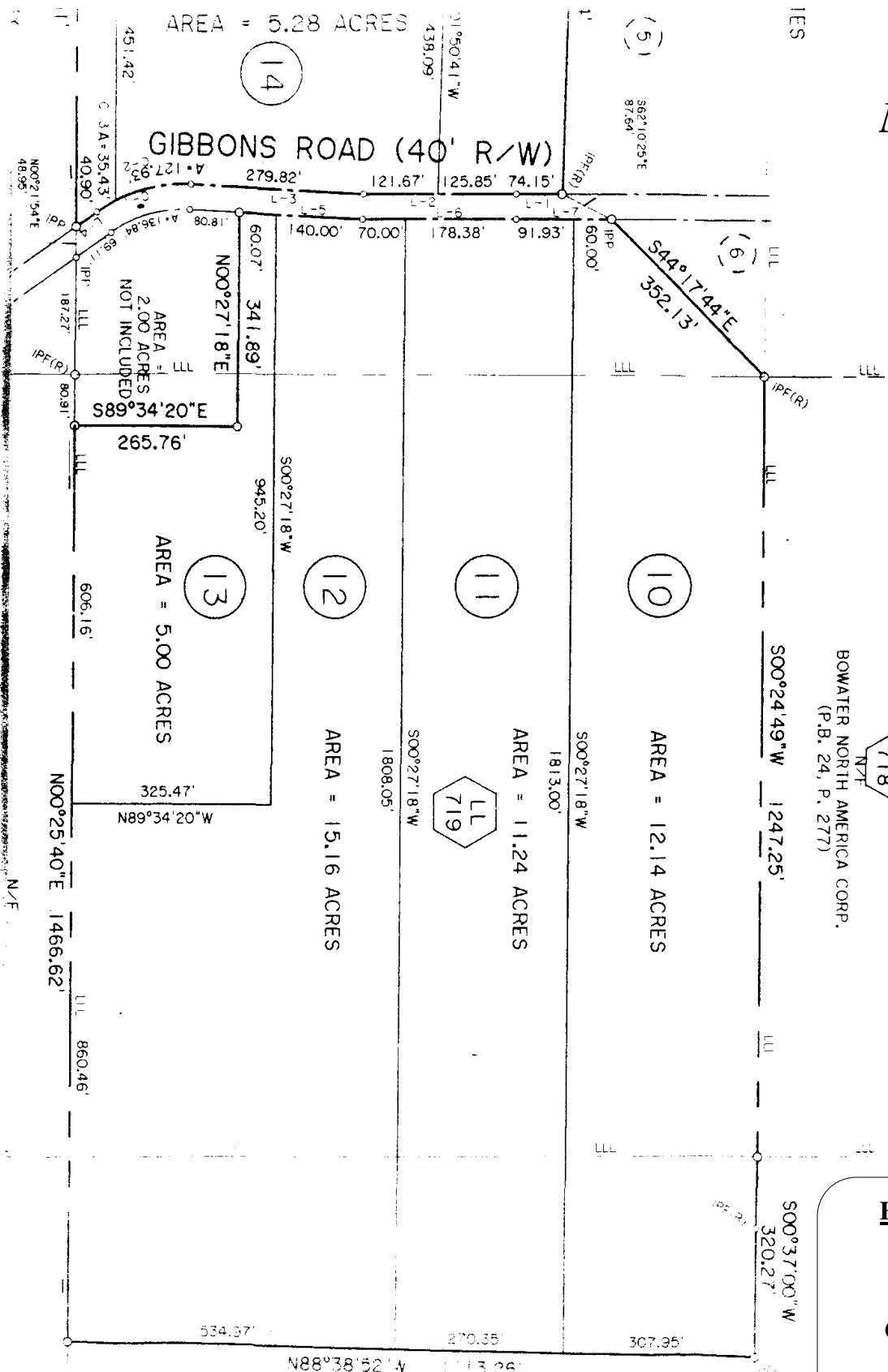
DISTANCE	
1"W	74.15'
1"W	247.52'
1"W	279.82'
1"W	40.90'
3"E	200.07'
7"E	248.38'
3"E	151.93'

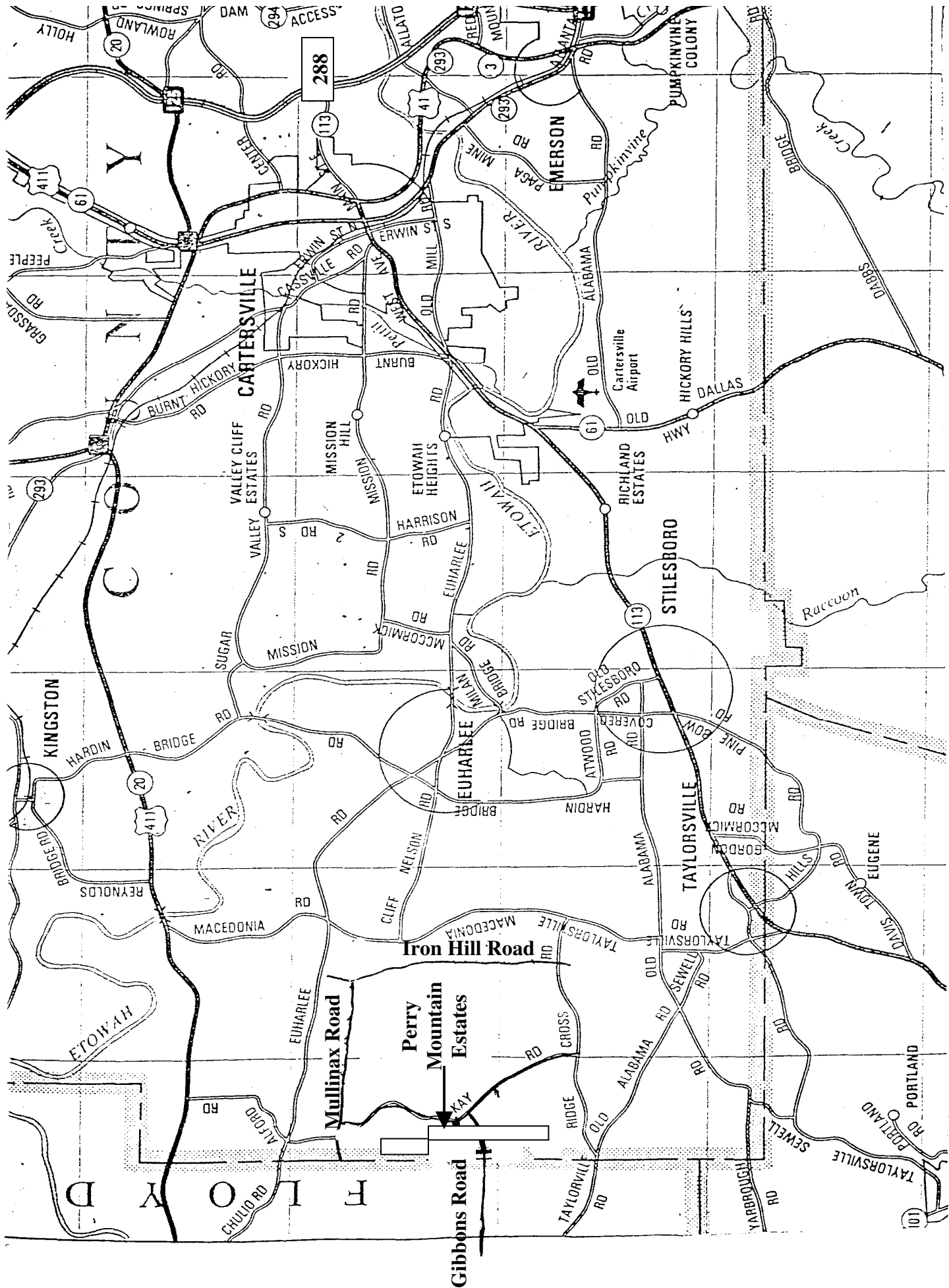
CURVE	RADIUS	LENGTH	DELTA	CHORD	CH. BEARI
C-1	246.50'	163.35'	37°58'09"	160.38'	574°09'2"
C-2	246.50'	127.93'	29°44'06"	126.50'	578°16'2"
C-3	246.50'	35.43'	8°14'03"	35.39'	559°17'2"

BOWATER NORTH AMERICA CORP.  
(P.B. 24, P. 277)



**FOR INFORMATION**  
**CALL:**  
**Jonathan Javetz**  
**Office: (404) 252-7070**  
**Cell: (678) 883-4854**





**Iron Hill Road**

**Perry Mountain Estates**

**Mullinax Road**

**Gibbons Road**

**CARTERSVILLE**

**STILESBORO**

**TAYLORSVILLE**

**KINGSTON**

**EMERSON**

**ETOWAH RIVER**

Raccoon

Creek

Old Cartersville Airport

HICKORY HILLS

DALLAS

OLD HWY

61

ALABAMA

ROAD

EMERSON

ROAD

PAGA

MINE

ROAD

REED

MOON

3

293

41

288

113

ACCESS

285

DAM

SPRINGS

ROWLAND

20

6

411

PEOPLE

ROAD

GRASSA

ROAD

293

20

411

PEOPLE

ROAD

GRASSA

ROAD

293

20

411

PEOPLE

ROAD

GRASSA

ROAD

293

20

411

PEOPLE

ROAD

GRASSA

ROAD

293

20

411

PEOPLE

ROAD

GRASSA

ROAD

293

20

411

PEOPLE

ROAD

GRASSA

ROAD

293

20

411

PEOPLE

ROAD

GRASSA

ROAD

293

20

411

PEOPLE

ROAD

GRASSA

ROAD

293

20

411

PEOPLE

ROAD

GRASSA

ROAD

293

20

411

PEOPLE

ROAD

GRASSA

ROAD

293

20

411

PEOPLE

ROAD

GRASSA

ROAD

293

20

411

PEOPLE

ROAD

GRASSA

ROAD

293

20

411

PEOPLE

ROAD

GRASSA

ROAD

293

20

411

PEOPLE

ROAD

GRASSA

ROAD

293

20

411

PEOPLE

ROAD

GRASSA

ROAD

293

20

411

PEOPLE

ROAD

GRASSA

ROAD

293

20

411

PEOPLE

ROAD

GRASSA

ROAD

293

20

411

PEOPLE

ROAD

GRASSA

ROAD

293

20

411

PEOPLE

ROAD

GRASSA

ROAD

293

20

411

PEOPLE

ROAD

GRASSA

ROAD

293

20

411

PEOPLE

ROAD

GRASSA

ROAD

293

20

411

PEOPLE

ROAD

GRASSA

ROAD

293

20

411

PEOPLE

ROAD

GRASSA

ROAD

293

20

411

PEOPLE

ROAD

GRASSA

ROAD

293

20

411

PEOPLE

ROAD

GRASSA

ROAD

293

20

411

PEOPLE

ROAD

GRASSA

ROAD

293

20

411

PEOPLE

ROAD

GRASSA

ROAD

293

20

411

PEOPLE

ROAD

GRASSA

ROAD

293

20

411

PEOPLE

ROAD

GRASSA

ROAD

293

20

411

PEOPLE

ROAD

GRASSA

ROAD

293

20

411

PEOPLE

ROAD

GRASSA

ROAD

293

20

411

PEOPLE

ROAD

GRASSA

ROAD

293

20

411

PEOPLE

ROAD

GRASSA

ROAD

293

20

411

PEOPLE

ROAD

GRASSA

ROAD

293

20

411

PEOPLE

ROAD

GRASSA

ROAD

293

20

411

PEOPLE

ROAD

GRASSA

ROAD

293

20

411

PEOPLE

ROAD

GRASSA

ROAD

293

20

411

PEOPLE

ROAD

GRASSA

ROAD

293

20

411

PEOPLE

ROAD

GRASSA

ROAD

293

20

411

PEOPLE

ROAD

GRASSA

ROAD

293

20

411

PEOPLE

ROAD

GRASSA

ROAD

293

20

411

PEOPLE

ROAD

GRASSA

ROAD

293

20

411

PEOPLE

ROAD

GRASSA

ROAD

293

20

411

PEOPLE

ROAD

GRASSA

ROAD

293

20

411

PEOPLE

ROAD

GRASSA

ROAD

293

20

411

PEOPLE

ROAD

GRASSA

ROAD

293

## **Directions From Atlanta**

- Take I-75 North to exit 288, follow signs to Highway 113.
- Turn right at Covered Bridge Rd. There is a BP station on the corner.
- Turn Left onto Old Alabama Rd
- At the end of the road turn Right onto Iron Hill Road.
- Turn left onto Ridge Cross Road, also known as Miller Farm Road.
- Go 3/10 mile and turn right onto John Kay Road.
- Go 2 miles Turn Left on Gibbons Road and the property is on both sides of the road.

## **Or**

- Take I-75 North to exit 283 “Emerson”.
- Turn Left off exit
- Go under Highway 41.
- Turn Left onto Old Alabama.
- Go 6 miles turn Right at dead-end onto Highway 61.
- Go 2.3 miles and turn left onto Highway 113
- Now follow directions from 2<sup>nd</sup> bullet above.