

# SUNNYSIDE FARMS

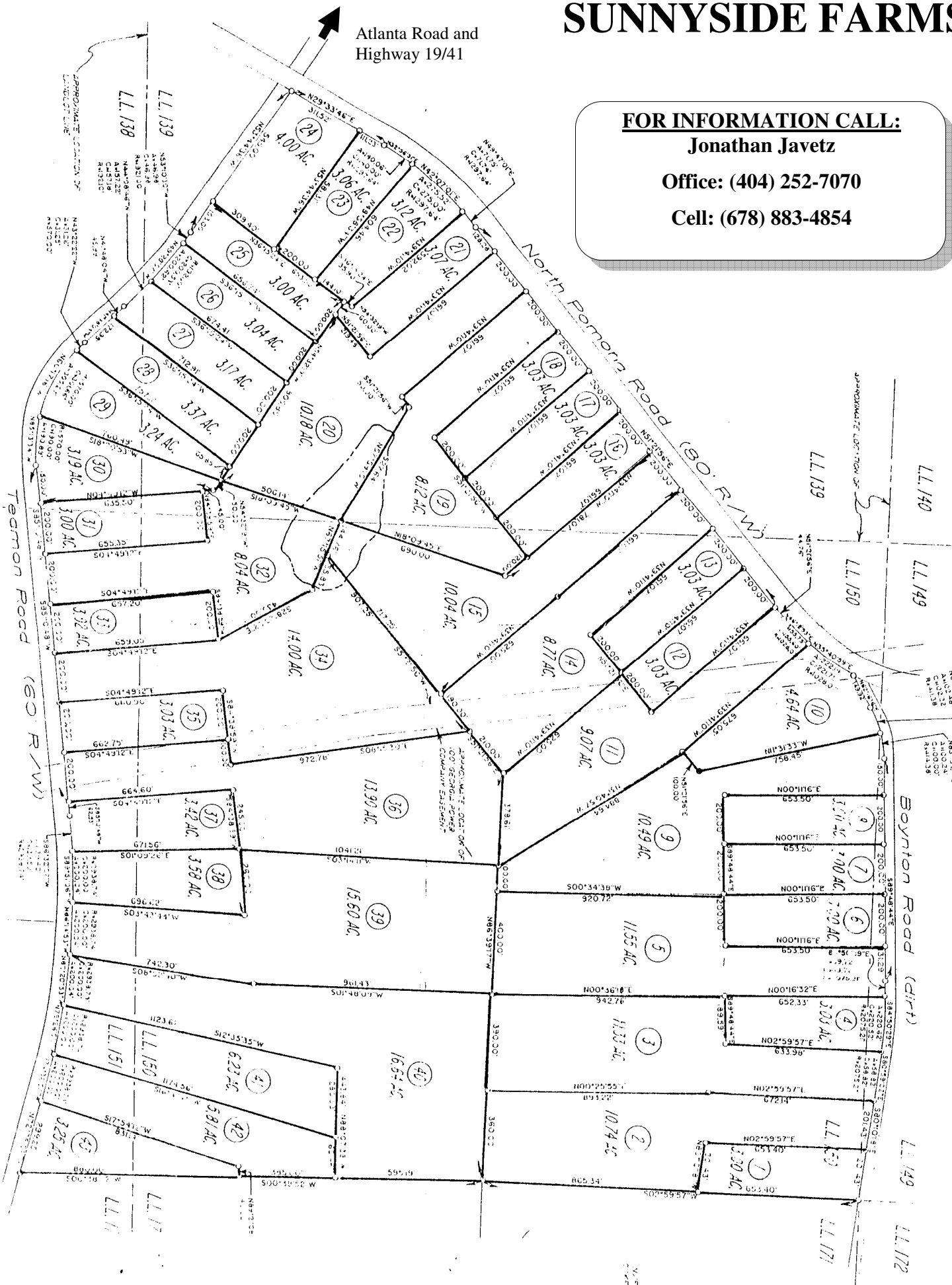
Atlanta Road and  
Highway 19/41

**FOR INFORMATION CALL:**

**Jonathan Javetz**

**Office: (404) 252-7070**

**Cell: (678) 883-4854**



# Realty Resources Corporation

102 Hammond Drive ♦ Atlanta, Georgia 30328 ♦ (404) 252-7070

## SUNNYSIDE FARMS (Spalding County)

	<u>LOT#</u>	<u>ACREAGE</u>	<u>Description</u>	<u>TOTAL PRICE</u>	<u>Minimum Down Payment</u>	<u>MIN PAYMENT</u> <u>0% - 1 YEAR</u>	<u>EST PAYMENT</u> <u>9% - 15 YEARS</u>
	7	3.00		TBD	TBD	TBD	TBD
	21	3.07	Pasture and Woods	\$32,950	\$950	\$225	\$309
	28	3.37	Flat Pasture with shrub growth	\$34,950	\$950	\$249	\$320
	34	14.0	Lake access with pasture and woods	\$89,950	\$1,500	\$495	\$845
	36	13.9	Creek, Pasture and Woods	\$85,500	\$1,500	\$495	\$795

\*\*\*\*\*Pricing and Availability Subject to Change\*\*\*\*\*

*All lots have county water*

**ALL LOTS NOT LISTED HAVE BEEN SOLD!!!!**

**U/C MEANS UNDER CONTRACT**

**10% DISCOUNT FOR CASH**

**9% INTEREST**

**NO PREPAYMENT PENALTY**

**FOR INFORMATION CALL:**

**Jonathan Javetz**  
**Office: (404) 252-7070**  
**Cell: (678) 883-4854**

Please visit our [www.realtyresourcescorp.com](http://www.realtyresourcescorp.com) for a complete listing of available properties.

# SUNNYSIDE FARMS

## DIRECTIONS TO SUNNY SIDE FARMS

### *From Atlanta:*

Take I-75 South to 19/41

Follow 19/41 South past the Atlanta Motor Speedway

Once you cross into Spalding County go to the second blinking Yellow Light; that is School Road.

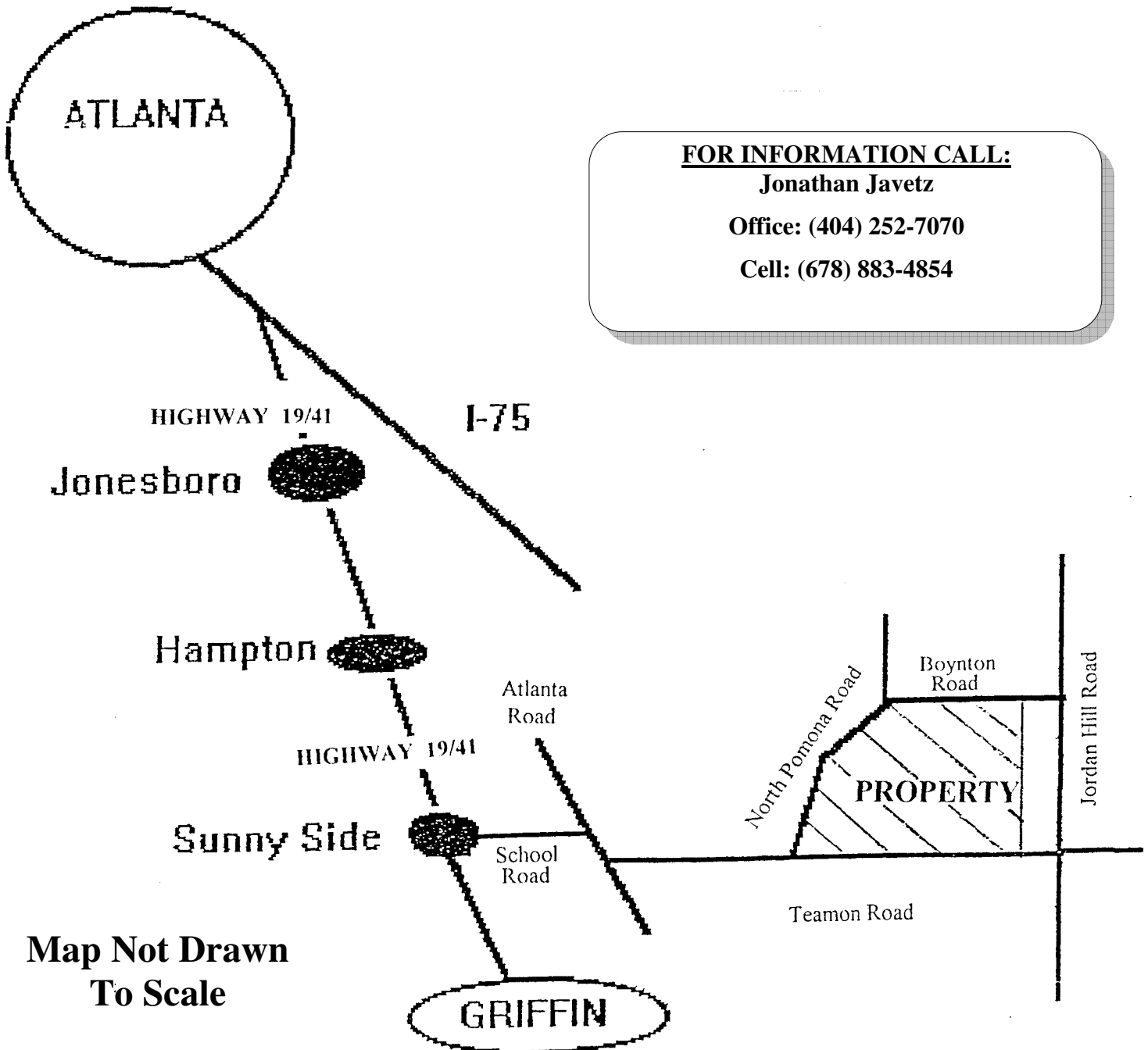
Turn Left onto School Road

(Some additional landmarks: Shell Station on the right and a Texaco just pass School Road on the left)

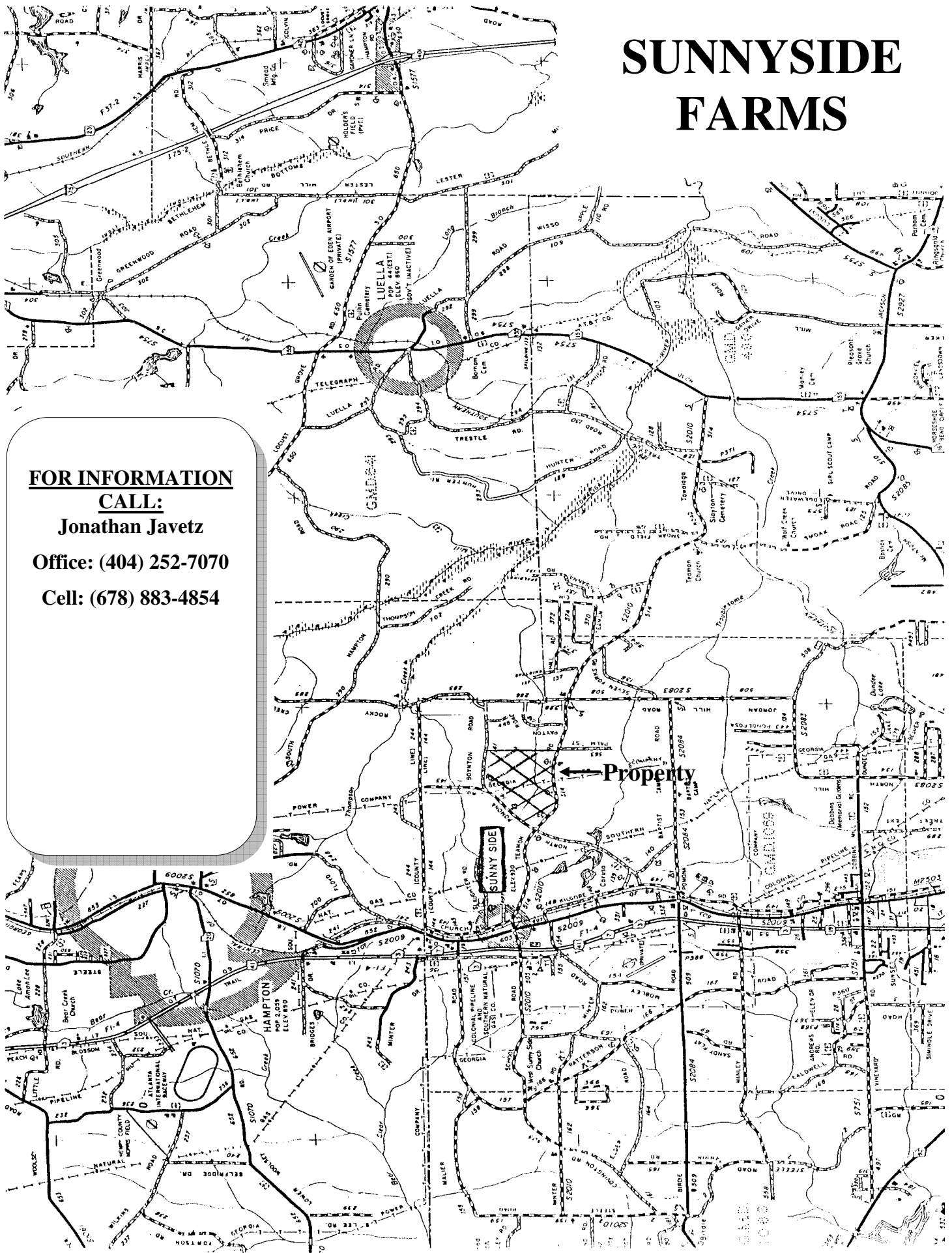
Go to dead end; Turn Right onto Atlanta Road

Go 200 feet and turn Left onto Teamon Road

Go approximately 1 mile, the property will be on the left



# SUNNYSIDE FARMS



**FOR INFORMATION**  
**CALL:**  
**Jonathan Javetz**  
**Office: (404) 252-7070**  
**Cell: (678) 883-4854**