

Realty Resources Corporation

102 Hammond Drive ♦ Atlanta, Georgia 30328 ♦ (404) 252-7070

WOODFOREST ESTATES (Carroll County)

<u>LOT#</u>	<u>ACREAGE</u>	<u>TOTAL</u>	<u>MIN DOWN PMT</u>	<u>MIN PAYMENT 0% - 1 YEAR</u>	<u>EST PAYMENT 8% - 14 YEARS</u>
1	5.00	\$24,950	\$1,000	\$199	\$250

*****Pricing and Availability Subject to Change*****

ALL LOTS NOT LISTED HAVE BEEN SOLD!!!!!!
U/C MEANS UNDER CONTRACT
10% DISCOUNT FOR CASH
8 % INTERST
NO PREPAYMENT PENALTY

FOR INFORMATION CALL:

Jonathan Javetz

Office: 404-252-7070

Cell: 678-883-4854

Please visit www.realtyresourcescorp.com for a complete listing of available properties.

4 Date in

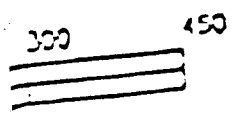
- Approved
- Approved
- Not Appro

Chris

INC.

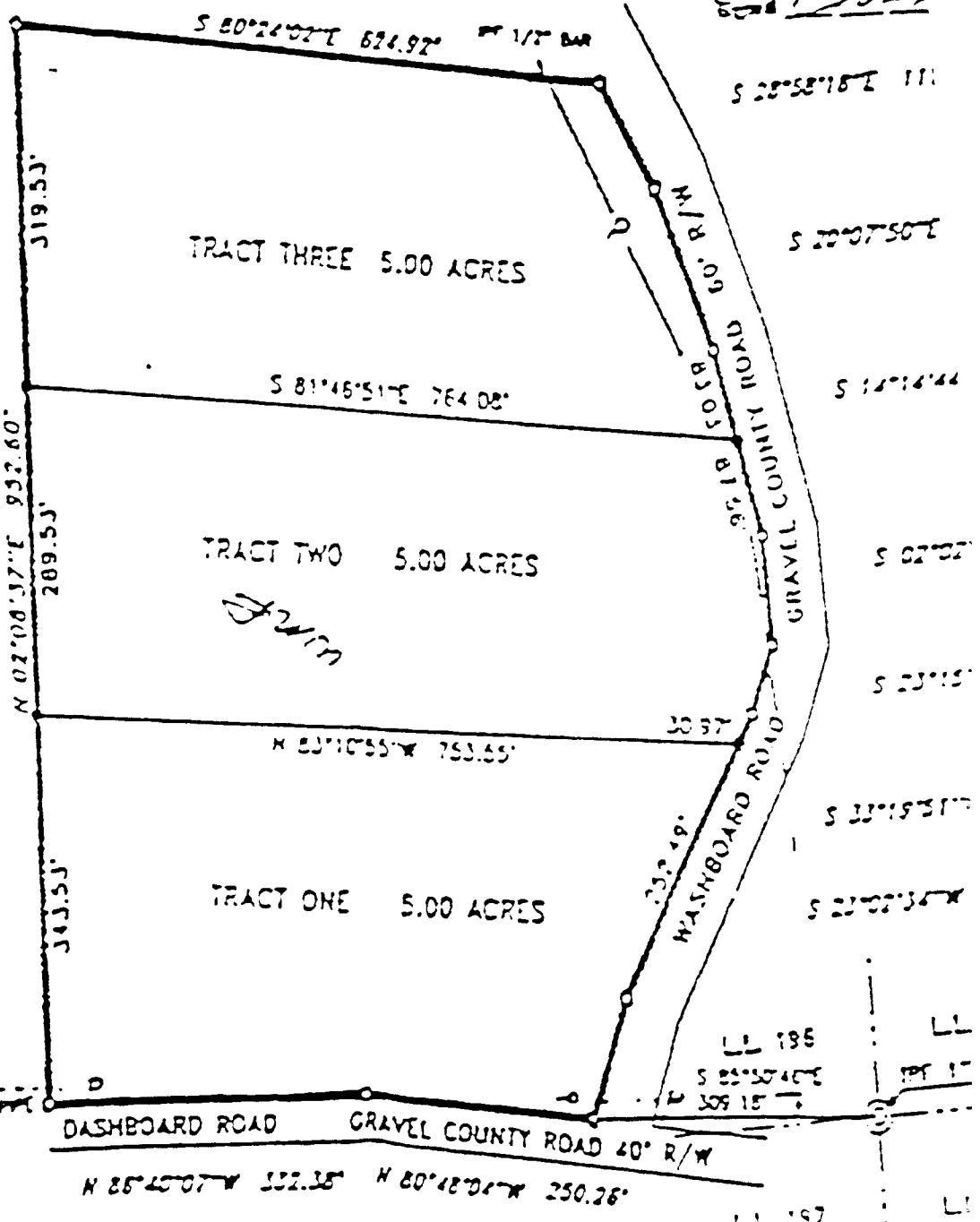
N/F BOBBY DALE ROBINSON

SECT. 14
= 150



IT SHOWS
CAN SMITH

N/F WM. J. BARR



300

450

66

1 30705

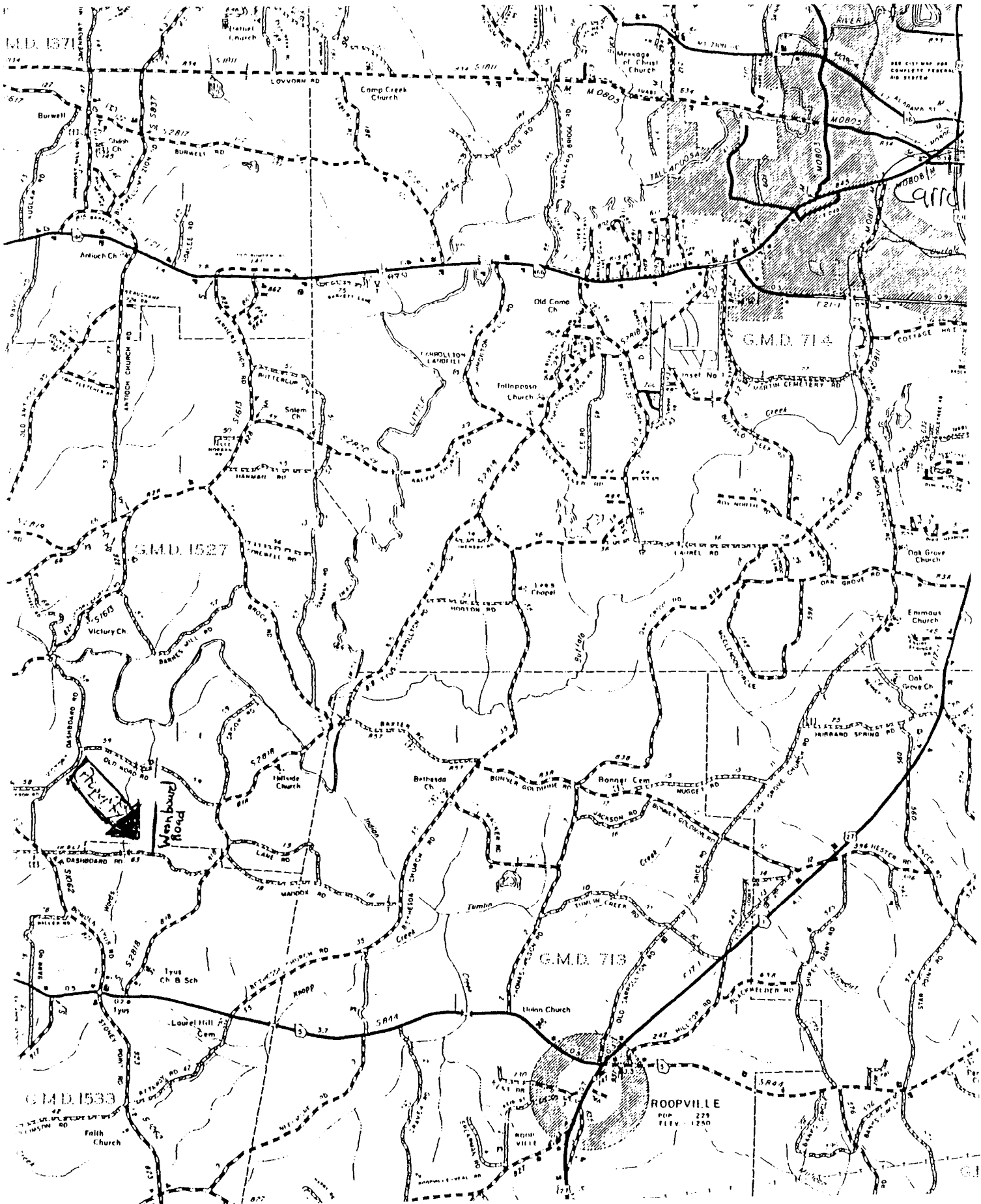
DIRECTIONS TO PROPERTY

FROM ATLANTA:

- * Take I – 20 West approximately 26 miles
- * Get off of Exit #24 (Carrollton/Villa Rica)
- * At top of ramp, turn left on GA 61/GA 101 South
- * Go approximately 8.7 miles (road becomes GA 166 West)
- * Take 166 West approximately 5.3 miles
- * Turn left at prison to follow signs to 166 West
- * Road will turn into single lane of traffic, and turn left at traffic light (Maple Street)
- * Go approximately 0.2 miles and turn left on TYUS-CARROLLTON ROAD (Marathon Station right next to the road)
- * Go 7.3 miles and turn right on DASHBOARD ROAD and follow until the intersection of DASHBOARD AND WASHBOARD ROAD.
- * Lot has double road frontage on these two (2) roads.

FROM CARROLLTON:

- * Start at Alabama Street and head toward, N. Cliff/S. Cliff Street about 0.1 miles
- * Take a left on South Park Street and go about 0.1 miles
- * Turn right on Maple Street and go 2.4 miles
- * Turn left onto TYUS-CARROLLTON ROAD (just past Marathon Gas Station) and go approximately 7.3 miles
- * Turn right onto DASHBOARD ROAD and follow about $\frac{1}{4}$ of a mile to the intersection of DASHBOARD AND WASHBOARD ROAD.



G.M.D. 1571

G.M.D. 714

G.M.D. 1527

G.M.D. 713

G.M.D. 1533

ROOPVILLE
POP. 229
ELEV. 1240

Washburn Road

Carroll